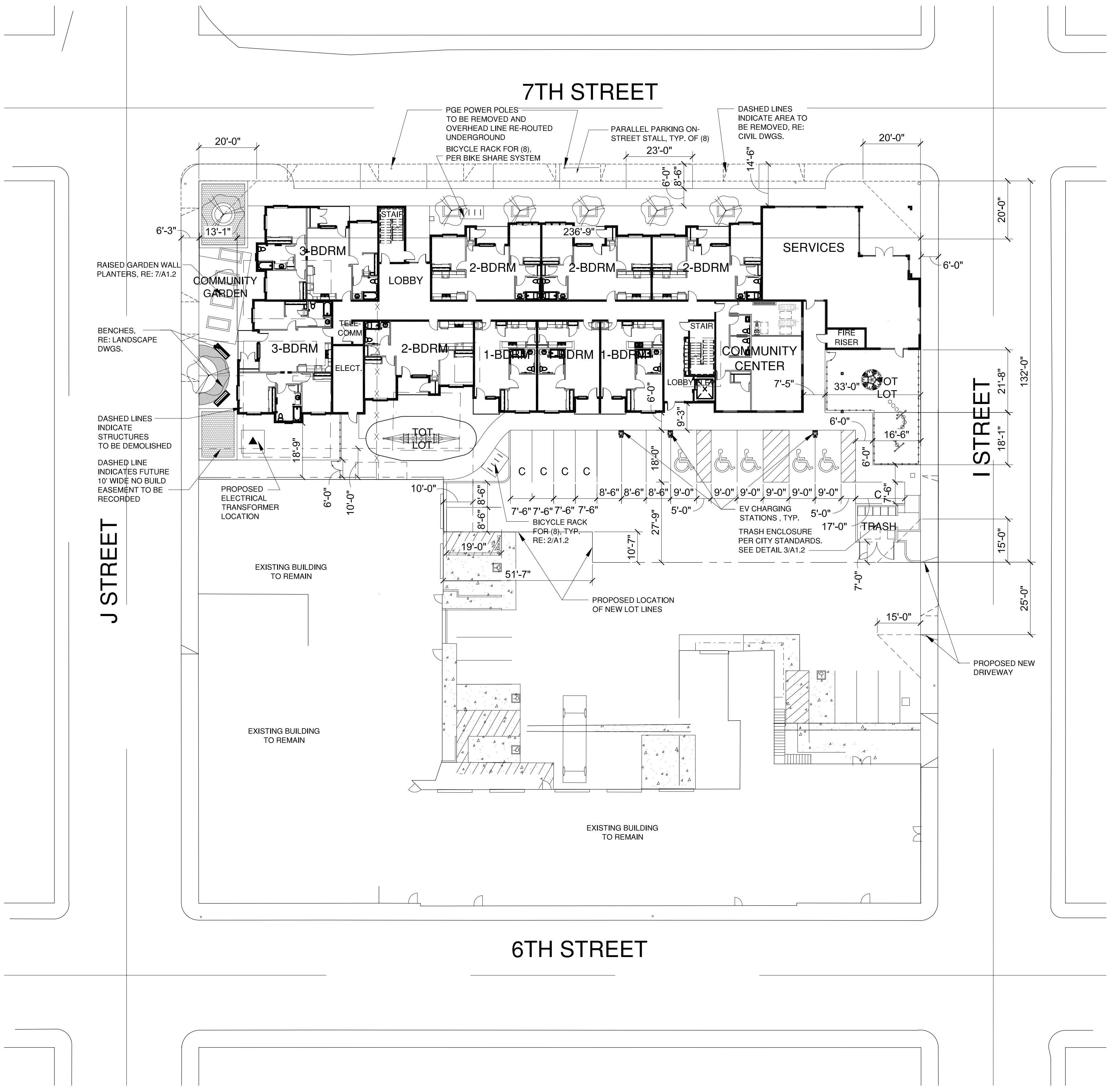




THIS DRAWING CONTAINS INFORMATION WHICH IS THE PROPRIETARY PROPERTY OF DOUGLAS L. GIBSON. NO UNAUTHORIZED REUSE OR DUPLICATION OF THESE PLANS OR ANY INFORMATION CONTAINED HEREIN WITHOUT THE EXPRESS WRITTEN CONSENT OF DOUGLAS L. GIBSON. THIS DRAWING IS NOT TO BE USED FOR CONSTRUCTION UNLESS IT IS SIGNED BY THE ARCHITECT.



APPLICANT
 ARCATA 7TH STREET LP
 CHRIS DART
 5251 ERICSON WAY
 ARCATA, CA 95521
 (707)-825-1531

ARCHITECT
 PACIFIC WEST ARCHITECTURE
 DOUGLAS L. GIBSON, AIA CALIFORNIA ARCHITECT C29792
 430 E. STATE STREET, SUITE 100
 EAGLE, IDAHO 83616
 (208)-461-0022 X3021

PROJECT DESCRIPTION
 4-STORY AFFORDABLE HOUSING PROJECT WITH (44) 1-, 2-, AND 3-BEDROOM UNITS WITH AN APPROXIMATELY 1,110 SF COMMUNITY CENTER, AS WELL AS AN 1,754 SF SERVICE SPACE AT GROUND FLOOR. THE PROJECT IS LOCATED IN A COMMERCIAL CENTRAL (CC) ZONE. ON-SITE PARKING FOR (15) CARS IS PROPOSED ALONG WITH TOT LOTS, AND COMMUNITY GARDEN AS AMENITIES FOR RESIDENTS. EACH RESIDENTIAL UNIT WILL HAVE PRIVATE OPEN SPACE IN THE FORM OF A PATIO OR BALCONY. ADDITIONAL LANDSCAPING AND OPEN SPACE WITH NATIVE SPECIES AS WELL AS A PUBLIC PLAZA AT WEST SIDE OF SITE AT CORNER OF J AND 7TH STREETS IS PROPOSED.

PARCEL / ZONING
 PROJECT ADDRESS: TBD/980 6TH STREET
 ARCATA, CA 95521
 APN: 021-163-006
 JURISDICTION: CITY OF ARCATA
 FIRE DISTRICT: ARCATA FIRE DISTRICT
 ZONING: COMMERCIAL CENTRAL (CC)
 COASTAL ZONE: YES - CENTRAL BUSINESS DISTRICT
 ALQUIST PRIOR: NO
 URBAN SERVICES: YES
 FEMA FLOOD ZONE: NO

CODE REFERENCES
 2019 CALIFORNIA BUILDING CODE
 2016 CALIFORNIA ELECTRICAL CODE
 2016 CALIFORNIA MECHANICAL CODE
 2019 CALIFORNIA PLUMBING CODE
 2016 CALIFORNIA ENERGY CODE
 TITLE 24, PART 6
 2016 CALIFORNIA GREEN BUILDING CODE
 2016 CALIFORNIA FIRE CODE
 UFAS - CURRENT EDITION
 CITY OF ARCATA CODES AND REGULATIONS INCLUDING COASTAL LAND USE AND DEVELOPMENT GUIDE

OCCUPANCY TYPE: A-3/B/R-2
 CONSTRUCTION TYPE: VA
 STRUCTURAL SYSTEM: CONCRETE SLAB-ON-GRADE, WITH WOOD FRAMED INTERIOR AND EXTERIOR WALLS, WITH ENGINEERED LUMBER AND SOME STRUCTURAL STEEL AS NECESSARY.

ACCESSIBILITY

ADAPTABLE UNITS (ALL UNITS THAT ARE NOT ACCESSIBLE)	# OF UNITS	PERCENTAGE
ADAPTABLE UNITS (ALL UNITS THAT ARE NOT ACCESSIBLE)	37	84.1%
ACCESSIBLE UNITS (10% TOTAL)	5	11.4%
SENSORY IMPAIRED UNITS (4% TOTAL)	2	4.5%

UNIT MIX SUMMARY

CONDITIONED SQ. FOOTAGES		
AFFORDABLE UNITS		
(16) 1-BEDROOM UNITS	(16) X 609 S.F. =	9,744 S.F.
(16) 2-BEDROOM UNITS	(16) X 835 S.F. =	13,360 S.F.
(1) 2-BEDROOM-B UNITS	(1) X 959 S.F. =	959 S.F.
(11) 3-BEDROOM UNITS	(11) X 1,110 S.F. =	12,210 S.F.
TOTAL	(44) UNITS	36,273 S.F.

SITE SIZE
 29,948 S.F. +/- (0.69 ACRES +/-)
 64 DWELLING UNITS/ACRE

SITE COVERAGE

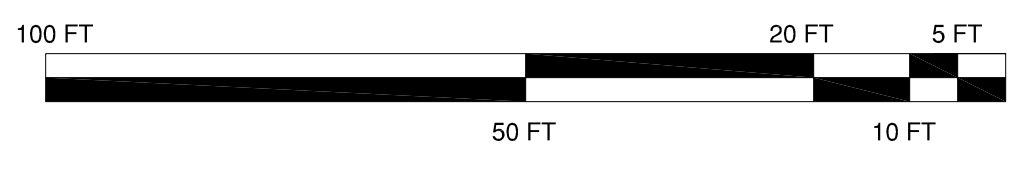
	SQ. FT.	PERCENTAGE
BUILDING FOOTPRINT	13,938 S.F.	46.54%
ON-SITE ASPHALT PAVING	6,501 S.F.	21.71%
CONCRETE WALKS & PLAZA AREAS	4,870 S.F.	16.26%
LANDSCAPE AREA	1,543 S.F.	5.15%
COMMUNITY CENTER	1,112 S.F.	3.71%
TOT LOT	1,510 S.F.	5.04%
COMMUNITY GARDEN	474 S.F.	1.59%
TOTAL SITE AREA	29,948 S.F.	100%

NOTE: *ALL NUMBERS PROVIDED ARE ESTIMATED FOR SITE COVERAGE

FIRE SPRINKLER
 AUTOMATIC NFPA 13 FULLY SPRINKLERED SYSTEM WITH CENTRAL CALL STATION, OFF-SITE MONITORING AND FPC'S AT EXTERIOR ACCESSIBLE FIRE SPRINKLER CLOSETS.

PARKING
 CITY OF ARCATA CC (COMMERCIAL - CENTRAL) SECTION 9.36.080(C) REQUIRES 1/3RD OF TOTAL RESIDENTIAL UNITS PARKING SPACES OR 44= (15) SPACES REQUIRED
 (15) PARKING SPACES, INCLUDING 33% OR (5) COMPACT SPACES, AND (5) FULL-SIZE ACCESSIBLE SPACES, PROVIDED PER CBC 11B-208.2.3.1. AND TABLE 11B-208.2. (3) ELECTRIC VEHICLE CHARGING STATIONS TO BE PROVIDED TO SERVICE A TOTAL OF (6) PARKING SPACES, INCLUDING (3) ACCESSIBLE SPACES.

SITE PLAN
 SCALE: 1" = 20'-0"



VICINITY MAP
 NTS

DG GROUP ARCHITECTURE PLLC
 430 E. STATE STREET, SUITE 100
 EAGLE, IDAHO 83616
 (208) 461-0022
 fax (208) 461-3267

ALASKA - ARIZONA - CALIFORNIA - CO. SERVICES - HAWAII - IDAHO - IOWA - KANSAS - LOUISIANA - MONTANA - NEVADA - NEW MEXICO - NEVADA - NORTH DAKOTA - OREGON - SOUTH DAKOTA - U.S.V.I. - UTAH - WASHINGTON - WYOMING

ISACKSONS ARCATA

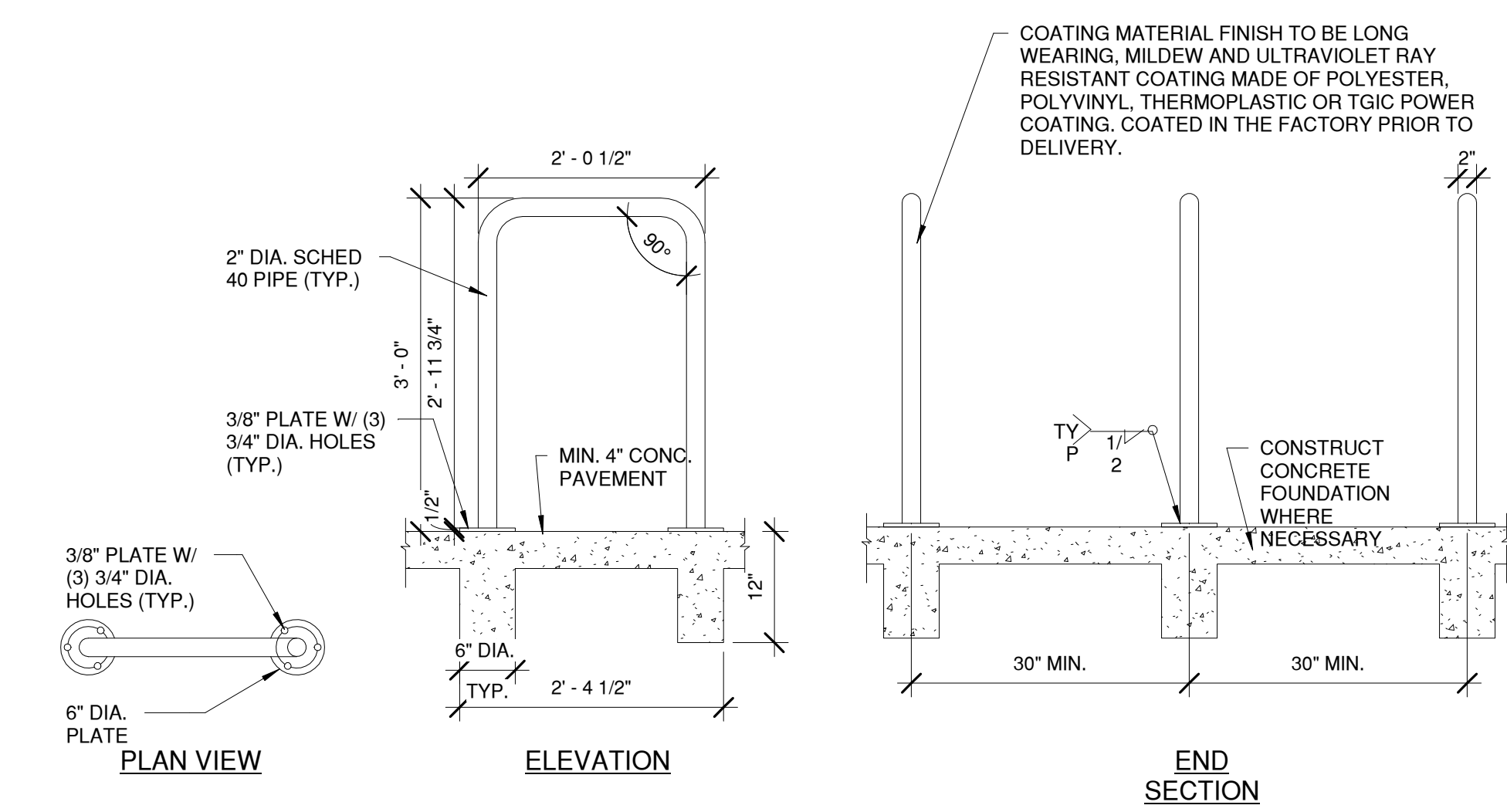
PROJECT

7TH STREET AT I & J STREETS

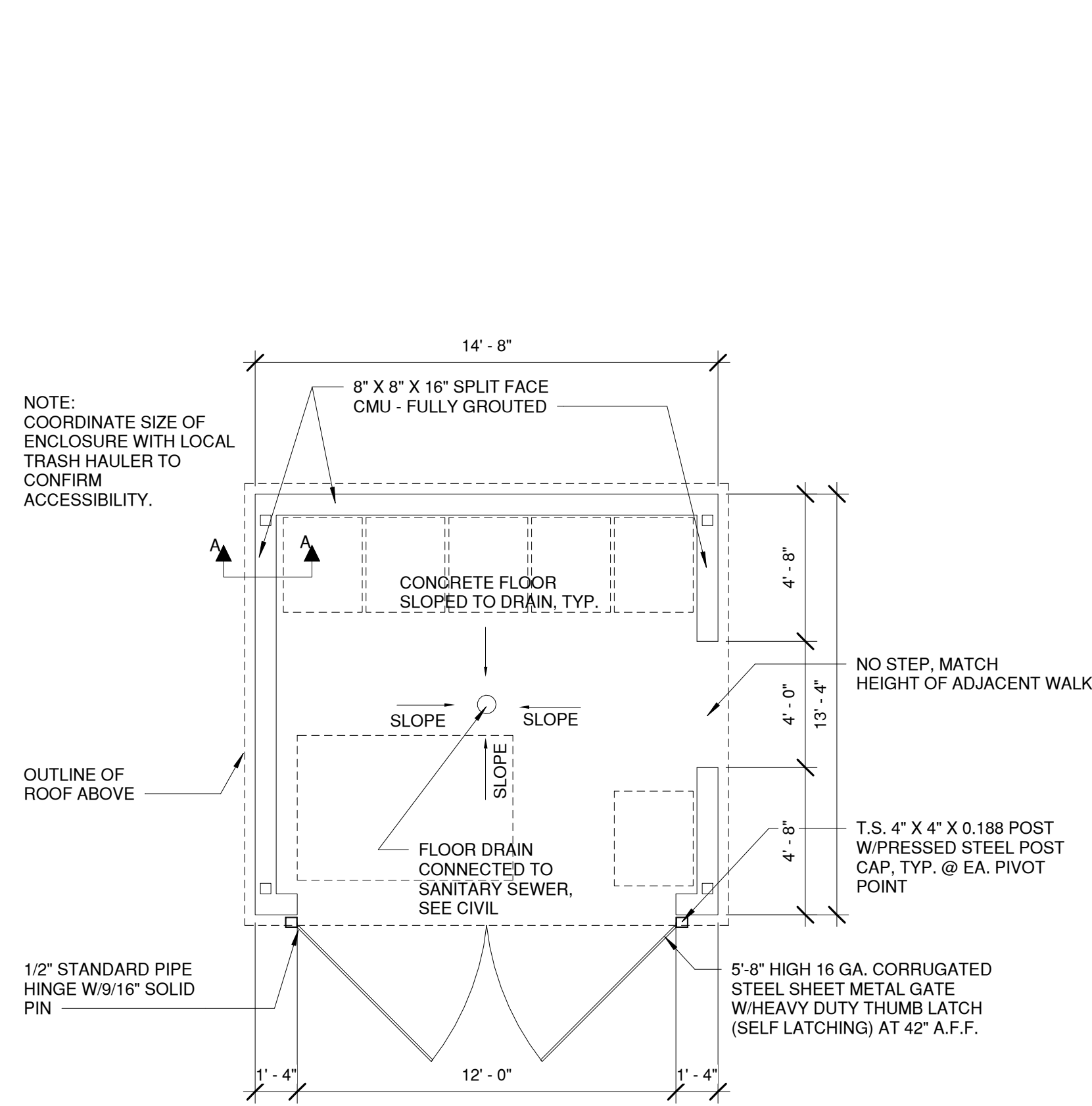
SCHEMATIC DESIGN



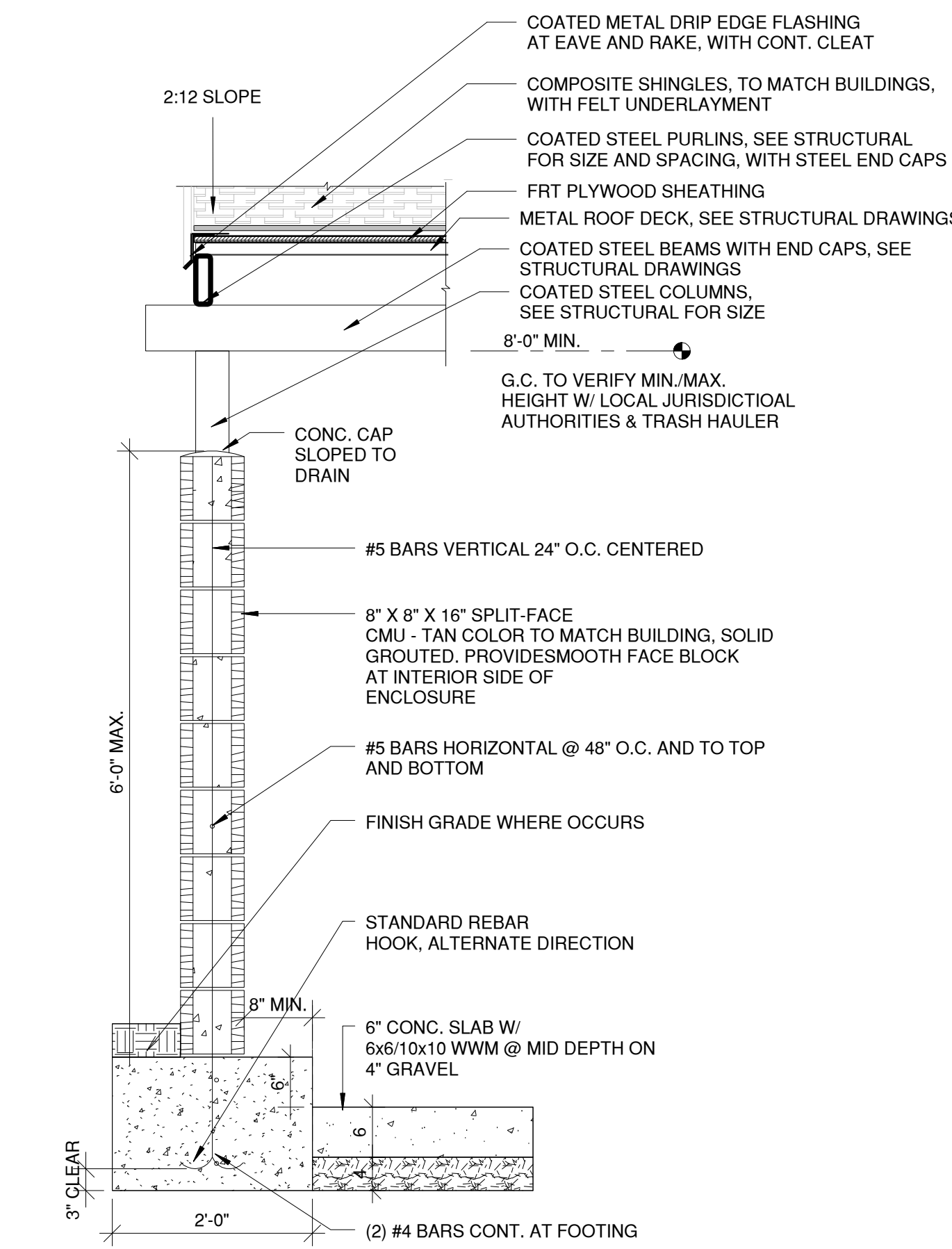
THIS DRAWING CONTAINS INFORMATION WHICH IS THE PROPERTY OF DOUGLAS L. SIBSON, INC. AND UNAUTHORIZED REUSE OR PLAGIATION OF THESE PLANS OR ANY INFORMATION CONTAINED HEREIN WITHOUT THE EXPRESS WRITTEN CONSENT OF DOUGLAS L. SIBSON, THIS DRAWING IS NOT TO BE USED FOR CONSTRUCTION UNTIL IT IS SIGNED BY THE ARCHITECT



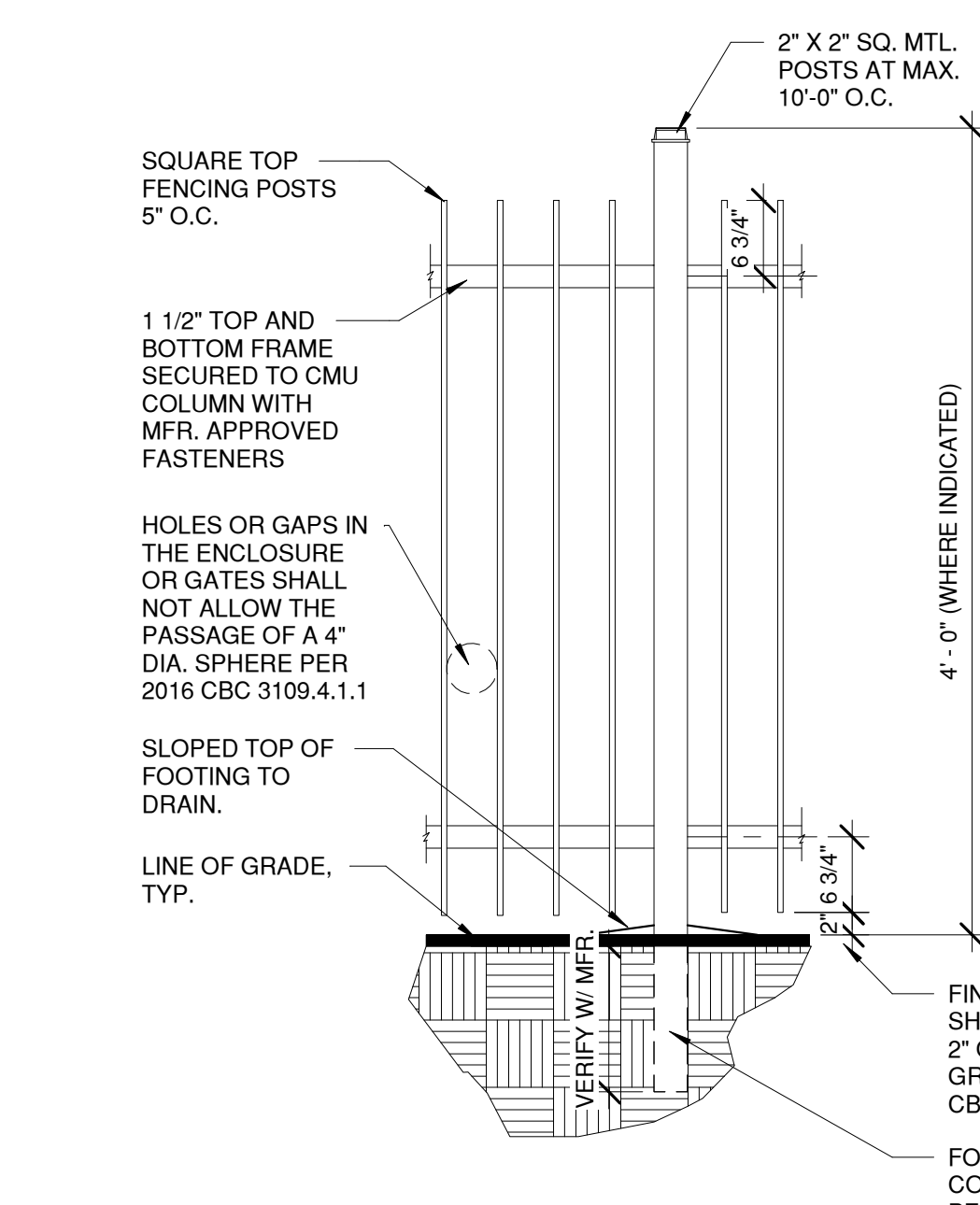
2 BICYCLE RACK DETAIL
3/4" = 1'-0"



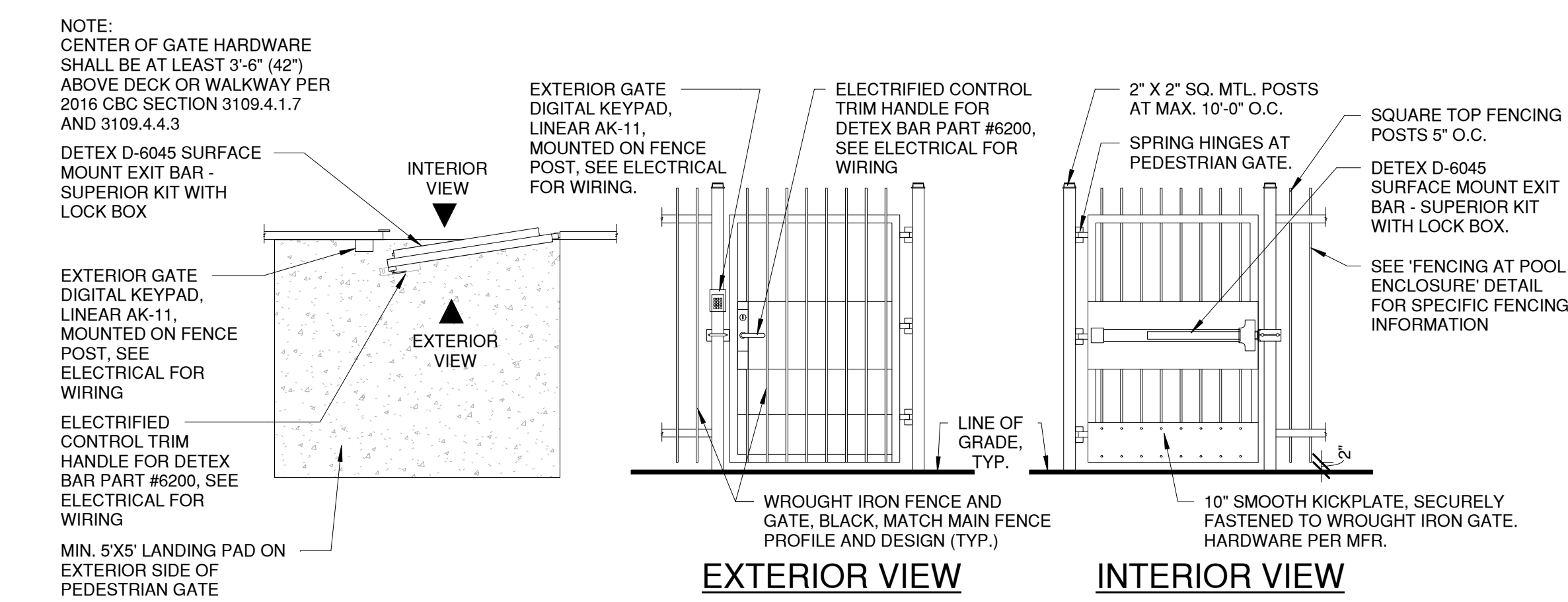
3 TRASH ENCLOSURE
1/4" = 1'-0"



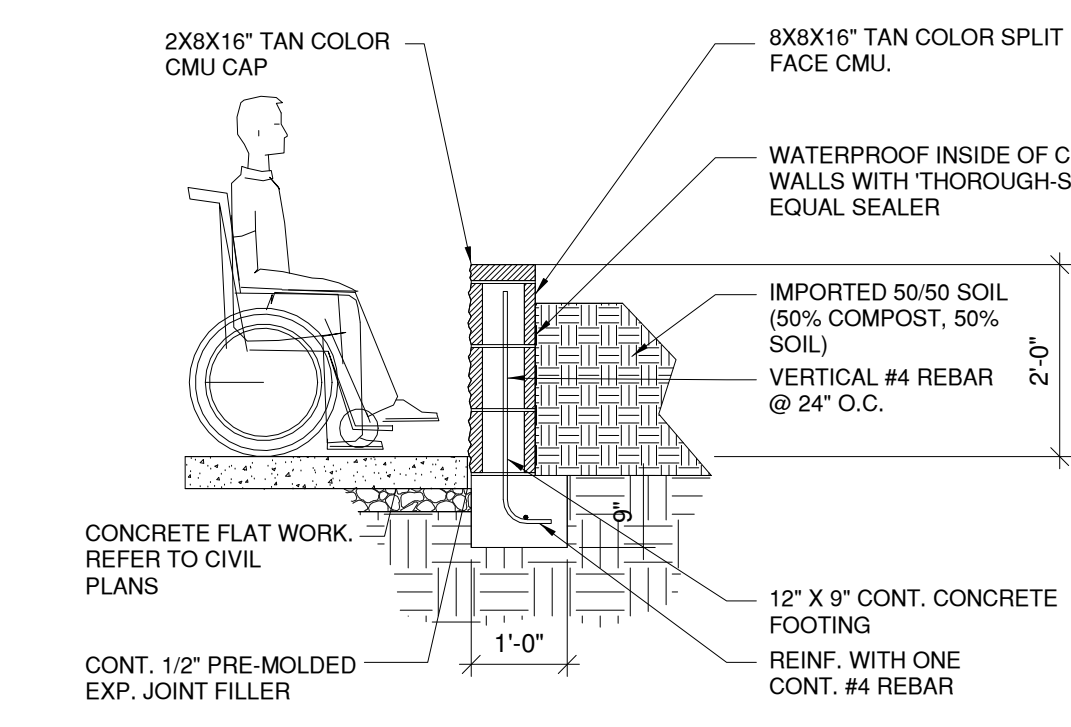
4 TRASH ENCLOSURE SECTION A-A
3/4" = 1'-0"



5 METAL FENCING
3/4" = 1'-0"



6 GATE AT FENCED AREA
3/8" = 1'-0"



7 TYPICAL RAISED GARDEN WALL
1/2" = 1'-0"

DG GROUP ARCHITECTURE PLLC
430 E. STATE STREET, SUITE 100
EAGLE, IDAHO 83616
(208) 461-0022
fax (208) 461-3267

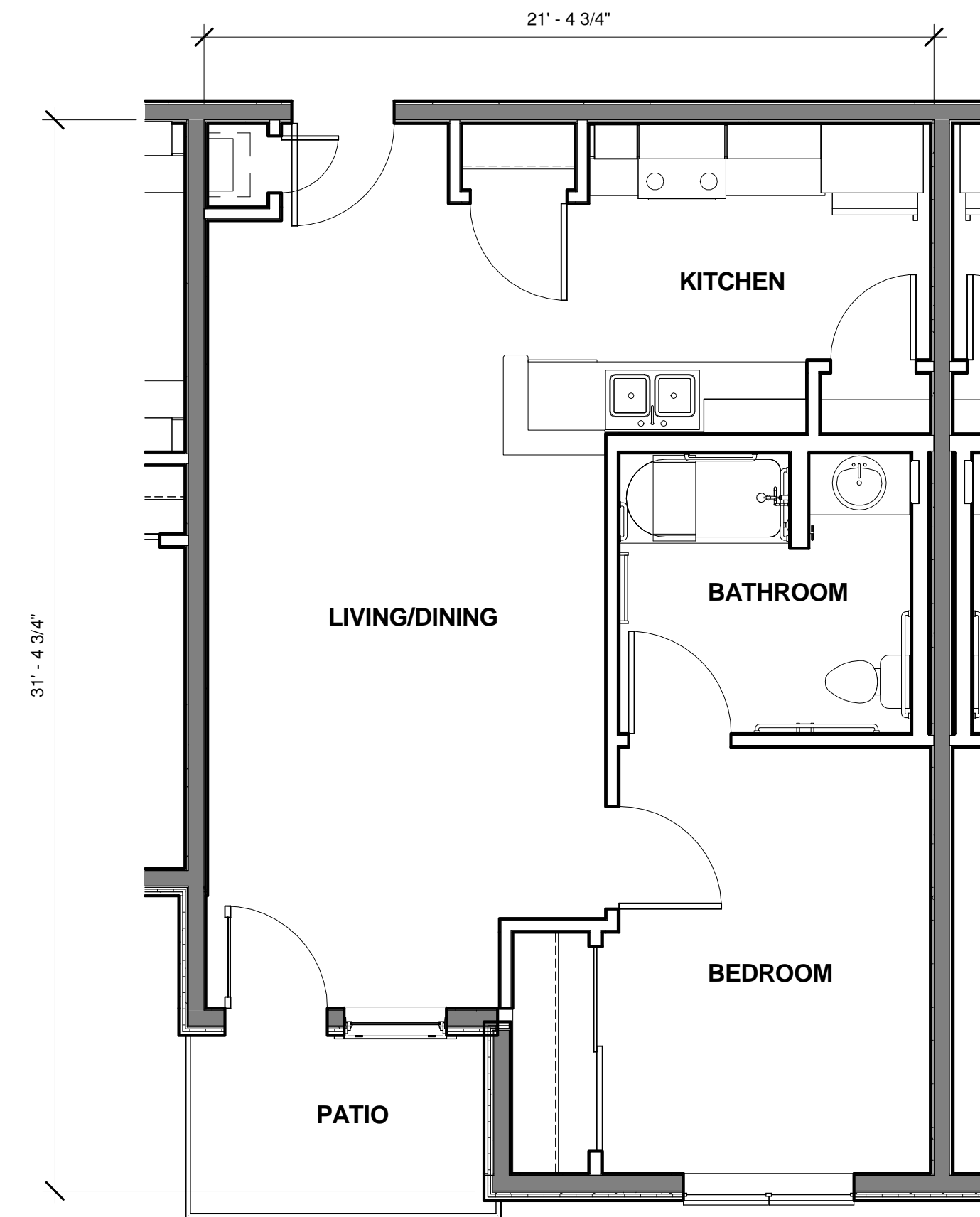
ALASKA - ARIZONA - CALIFORNIA - COLORADO - HAWAII - IDAHO - ILLINOIS - IOWA - KANSAS - LOUISIANA - MICHIGAN - MINNESOTA - MISSOURI - NEBRASKA - NEVADA - NEW JERSEY - NEW YORK - NORTH CAROLINA - NORTH DAKOTA - OREGON - SOUTH DAKOTA - UTAH - WASHINGTON - WYOMING

ARCATA, CA

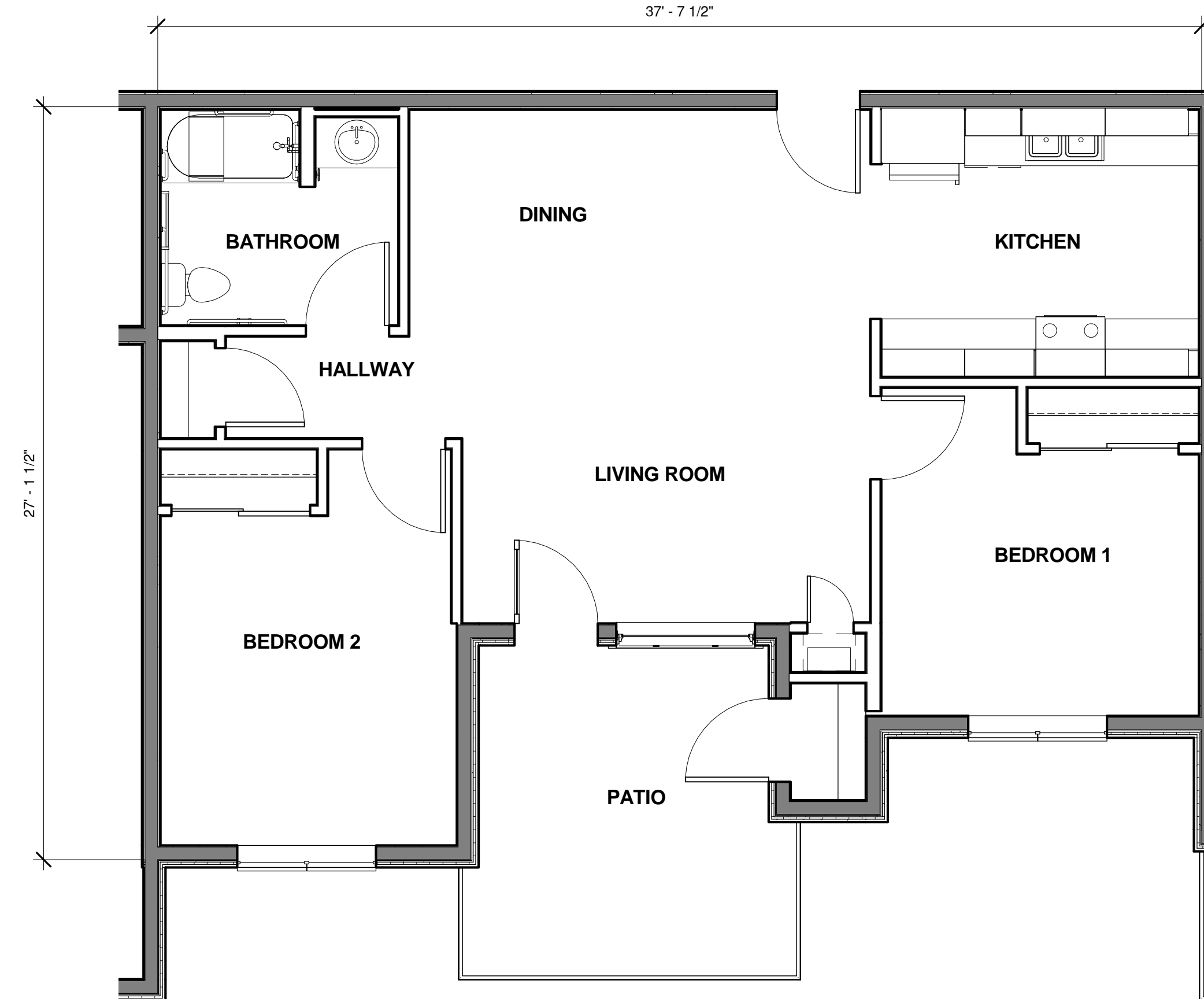
ISACKSONS ARCATA

PROJECT 7TH STREET AT I & J STREETS
SCHEMATIC DESIGN

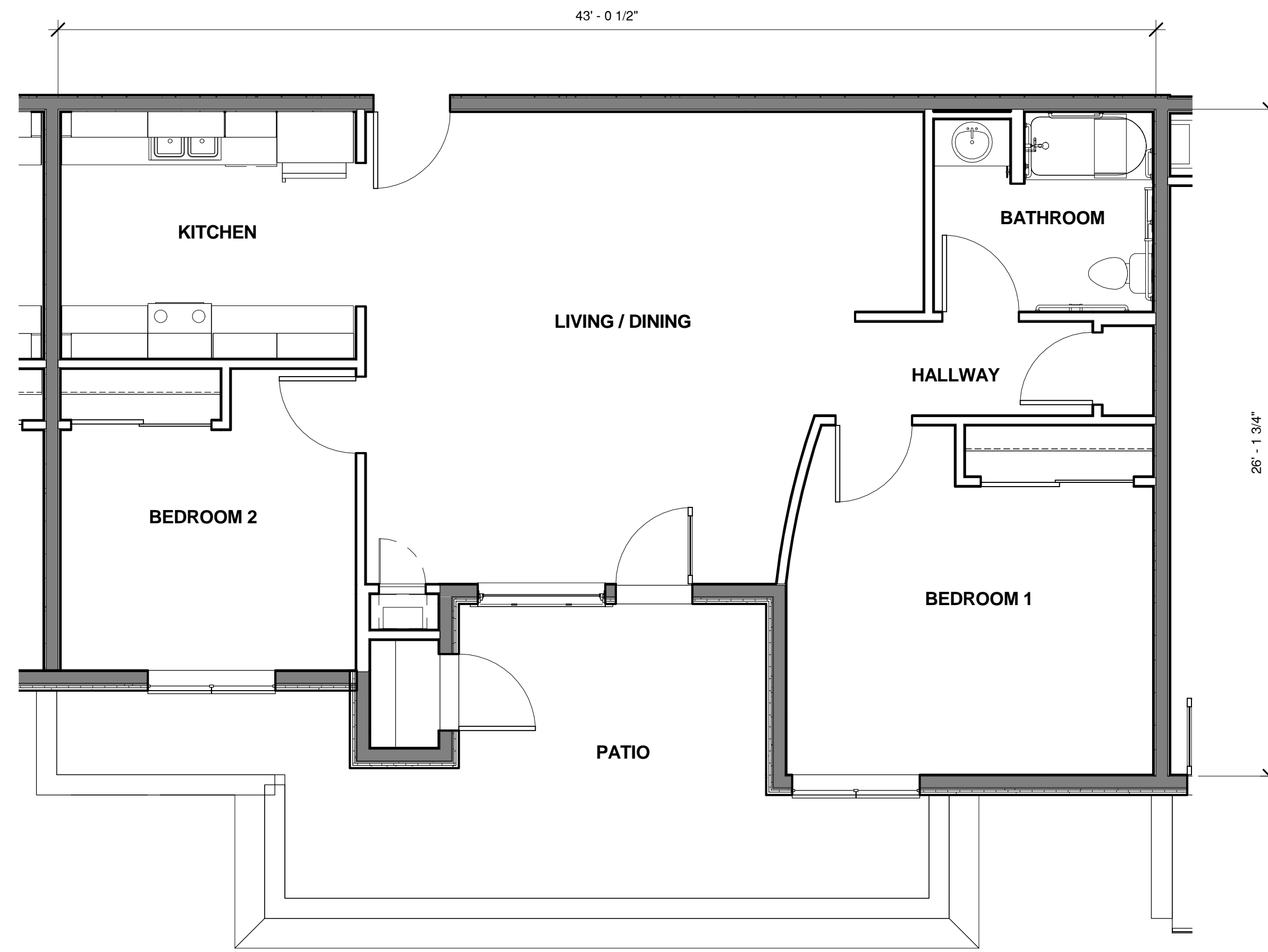
A1.2



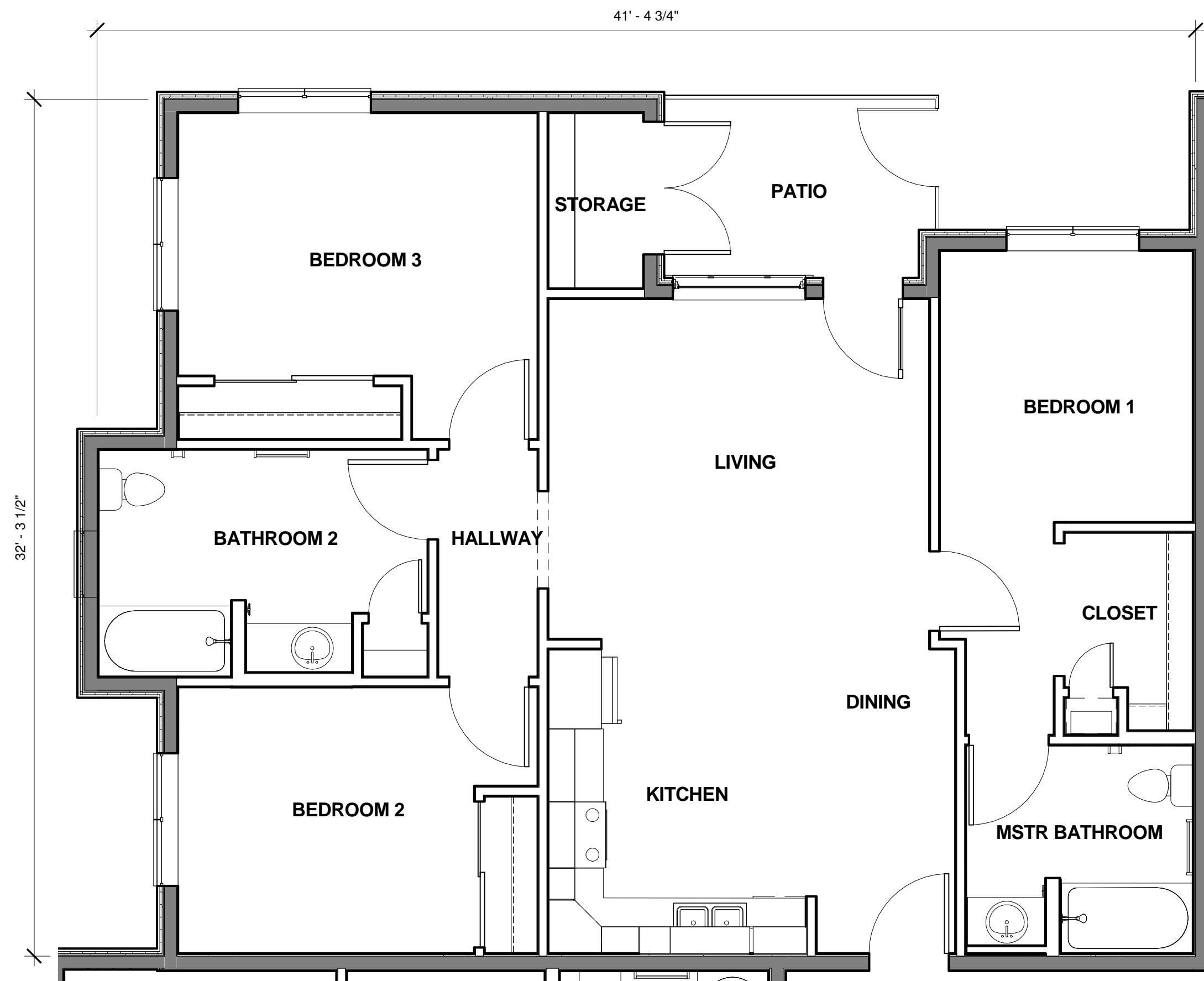
① 1-BEDROOM UNIT PLAN
1/4" = 1'-0" 609 SF CONDITIONED



② 2-BEDROOM UNIT PLAN
1/4" = 1'-0" 835 SF CONDITIONED



③ 2-BEDROOM UNIT B PLAN
1/4" = 1'-0" 959 SF CONDITIONED



④ 3-BEDROOM UNIT PLAN
1/4" = 1'-0" 1110 SF CONDITIONED

REVISIONS

COPYRIGHT © BY DG GROUP ARCHITECTURE PLLC

DATE

09/13/19

DRAWN BY

BP

PROJECT #

ECP18-9



THIS DRAWING CONTAINS INFORMATION WHICH IS THE PROPERTY OF DG GROUP ARCHITECTURE PLLC. NO UNAUTHORIZED REUSE OR PLAGIATION OF THESE DRAWINGS OR INFORMATION CONTAINED HEREIN WITHOUT THE EXPRESS WRITTEN CONSENT OF DOUGLAS L. SACKSON, THIS DRAWING IS NOT TO BE USED FOR CONSTRUCTION UNTIL IT IS SIGNED BY THE ARCHITECT

DG GROUP ARCHITECTURE PLLC

430 E. STATE STREET, SUITE 100

EAGLE, IDAHO 83616

(208) 461-0022

fax: (208) 461-3267

ALASKA - ARIZONA - CALIFORNIA - COLORADO - HAWAII - IDAHO - ILLINOIS - INDIANA - IOWA - KANSAS - MICHIGAN - MINNESOTA - MISSOURI - MONTANA - NEBRASKA - NEVADA - NEW JERSEY - NEW YORK - NORTH CAROLINA - NORTH DAKOTA - OREGON - SOUTH DAKOTA - UTAH - WASHINGTON - WYOMING

PROJECT

ISACKSONS ARCATA

7TH STREET AT I & J STREETS

A2.0

SCHEMATIC DESIGN

ARCATA, CA



THIS DRAWING CONTAINS INFORMATION WHICH IS THE PROPERTY OF DG GROUP ARCHITECTURE PLLC. NO UNAUTHORIZED REUSE OR PLAGIATION OF THESE PLANS OR ANY INFORMATION CONTAINED HEREIN WITHOUT THE EXPRESS WRITTEN CONSENT OF DOUGLAS L. GIBSON, THIS DRAWING IS NOT TO BE USED FOR CONSTRUCTION UNTIL IT IS SIGNED BY THE ARCHITECT



1 FIRST FLOOR PLAN
1/8" = 1'-0"

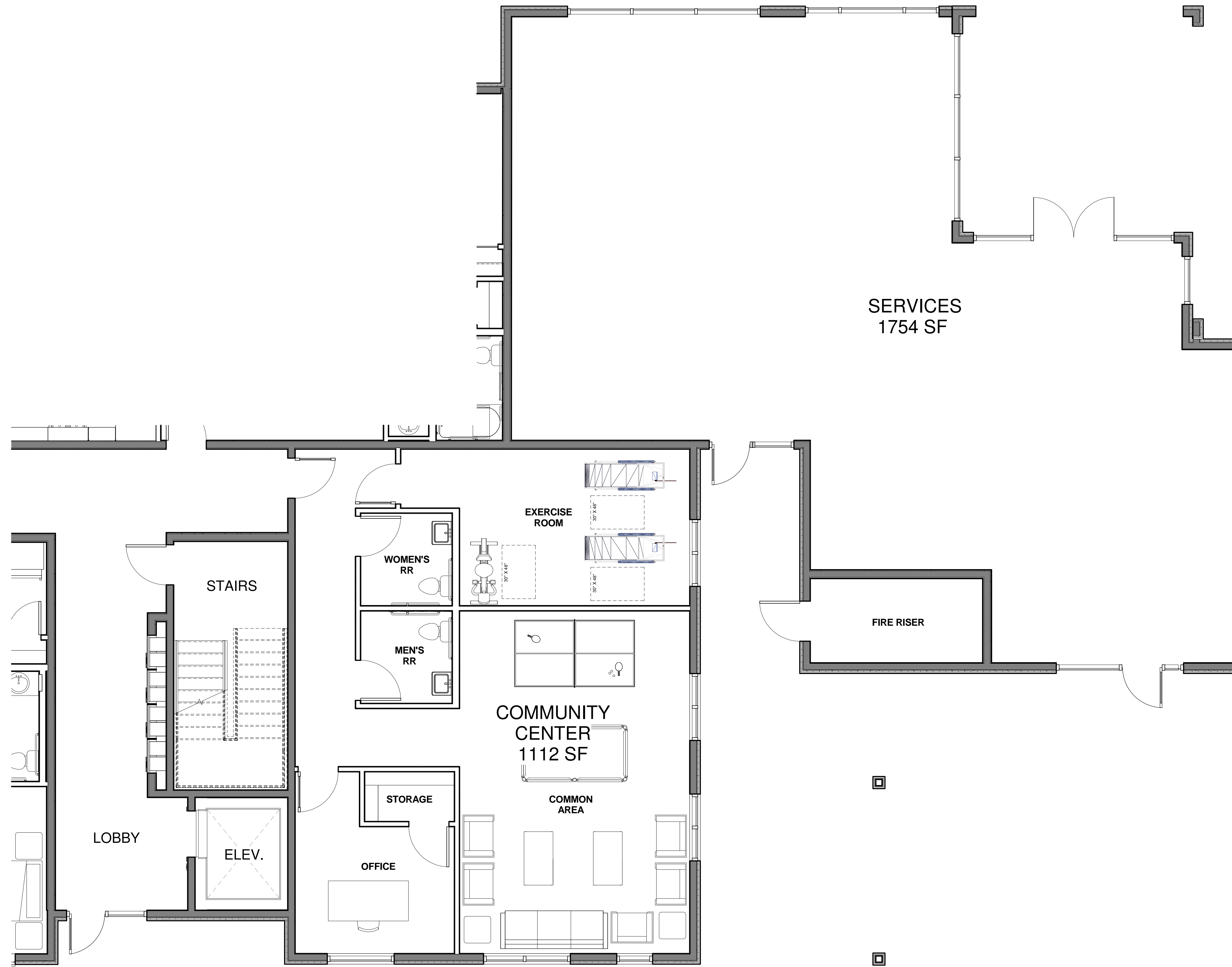
DG GROUP ARCHITECTURE PLLC
430 E. STATE STREET, SUITE 100
EAGLE, IDAHO 83616
(208) 461-0022
fax: (208) 461-3267

ALASKA - ARIZONA - CALIFORNIA - COLORADO - HAWAII - IDAHO - ILLINOIS - INDIANA - IOWA - KANSAS - MICHIGAN - MINNESOTA - MISSOURI - NEBRASKA - NEVADA - NEW JERSEY - NEW YORK - NORTH CAROLINA - NORTH DAKOTA - OREGON - SOUTH DAKOTA - UTAH - WASHINGTON - WYOMING

PROJECT
7TH STREET AT I & J STREETS
ARCATA, CA

ISACKSONS ARCATA

PROJECT
7TH STREET AT I & J STREETS
ARCATA, CA



1 ENLARGED FIRST FLOOR PLAN
1/4" = 1'-0"

REVISIONS

COPYRIGHT © BY DG GROUP
ARCHITECTURE PLLC

DATE
09/13/19

DRAWN BY
BP

PROJECT #
ECP18-9



THIS DRAWING CONTAINS INFORMATION WHICH IS THE PROPERTY OF DOUGLAS L. SISKIA, INC. AND IS UNAUTHORIZED REUSE OR PLAGIATION OF THESE PLANS OR ANY INFORMATION CONTAINED HEREIN WITHOUT THE EXPRESS WRITTEN CONSENT OF DOUGLAS L. SISKIA, INC. THIS DRAWING IS NOT TO BE USED FOR CONSTRUCTION UNTIL IT IS SIGNED BY THE ARCHITECT

DG GROUP ARCHITECTURE PLLC

430 E. STATE STREET, SUITE 100
EAGLE, IDAHO 83616
(208) 461-0022
fax: (208) 461-3267

ALASKA - ARIZONA - CALIFORNIA - COLORADO - HAWAII - IDAHO - ILLINOIS - IOWA - KANSAS - MICHIGAN - MINNESOTA - MISSOURI - NEBRASKA - NEVADA - NEW JERSEY - NEW YORK - NORTH CAROLINA - NORTH DAKOTA - OREGON - SOUTH DAKOTA - UTAH - WASHINGTON - WYOMING

ARCATA, CA

ISACKSONS ARCATA

PROJECT
7TH STREET AT I & J STREETS
SCHEMATIC DESIGN

A2.1A



THIS DRAWING CONTAINS INFORMATION WHICH IS THE PROPERTY OF DOUGLAS L. GIBSON, INC. NO UNAUTHORIZED REUSE OR REPLICATION OF THESE PLANS OR ANY INFORMATION CONTAINED HEREIN WITHOUT THE EXPRESS WRITTEN CONSENT OF DOUGLAS L. GIBSON, INC. THIS DRAWING IS NOT TO BE USED FOR CONSTRUCTION UNTIL IT IS SIGNED BY THE ARCHITECT



1 SECOND FLOOR PLAN
1/8" = 1'-0"

DG GROUP ARCHITECTURE PLLC
430 E. STATE STREET, SUITE 100
EAGLE, IDAHO 83616
(208) 461-0022
fax: (208) 461-3267

ALASKA - ARIZONA - CALIFORNIA - COLORADO - HAWAII - IDAHO - ILLINOIS - IOWA - KANSAS - MICHIGAN - MINNESOTA - MISSOURI - NEBRASKA - NEVADA - NEW JERSEY - NEW MEXICO - NEW YORK - NORTH CAROLINA - NORTH DAKOTA - OREGON - SOUTH DAKOTA - UTAH - WASHINGTON - WYOMING

ARCATA, CA

ISACKSONS ARCATA

PROJECT

7TH STREET AT I & J STREETS

SCHEMATIC DESIGN



THIS DRAWING CONTAINS INFORMATION WHICH IS THE PROPERTY OF DG GROUP ARCHITECTURE PLLC. NO UNAUTHORIZED REUSE OR REPLICATION OF THESE PLANS OR ANY INFORMATION CONTAINED HEREIN WITHOUT THE EXPRESS WRITTEN CONSENT OF DOUGLAS L. GIBSON. THIS DRAWING IS NOT TO BE USED FOR CONSTRUCTION UNTIL IT IS SIGNED BY THE ARCHITECT.



① THIRD FLOOR PLAN
1/8" = 1'-0"

DG GROUP ARCHITECTURE PLLC

430 E. STATE STREET, SUITE 100

EAGLE, IDAHO 83616

(208) 461-0022

fax: (208) 461-3267

ALASKA - ARIZONA - CALIFORNIA - COLORADO - HAWAII - IDAHO - ILLINOIS - IOWA - KANSAS - MICHIGAN - MINNESOTA - MONTANA - NEBRASKA - NEVADA - NEW JERSEY - NEW MEXICO - NEW YORK - NORTH CAROLINA - NORTH DAKOTA - OREGON - SOUTH DAKOTA - U.S.V.I. - UTAH - WASHINGTON - WYOMING

ARCATA, CA

ISACKSONS ARCATA

PROJECT

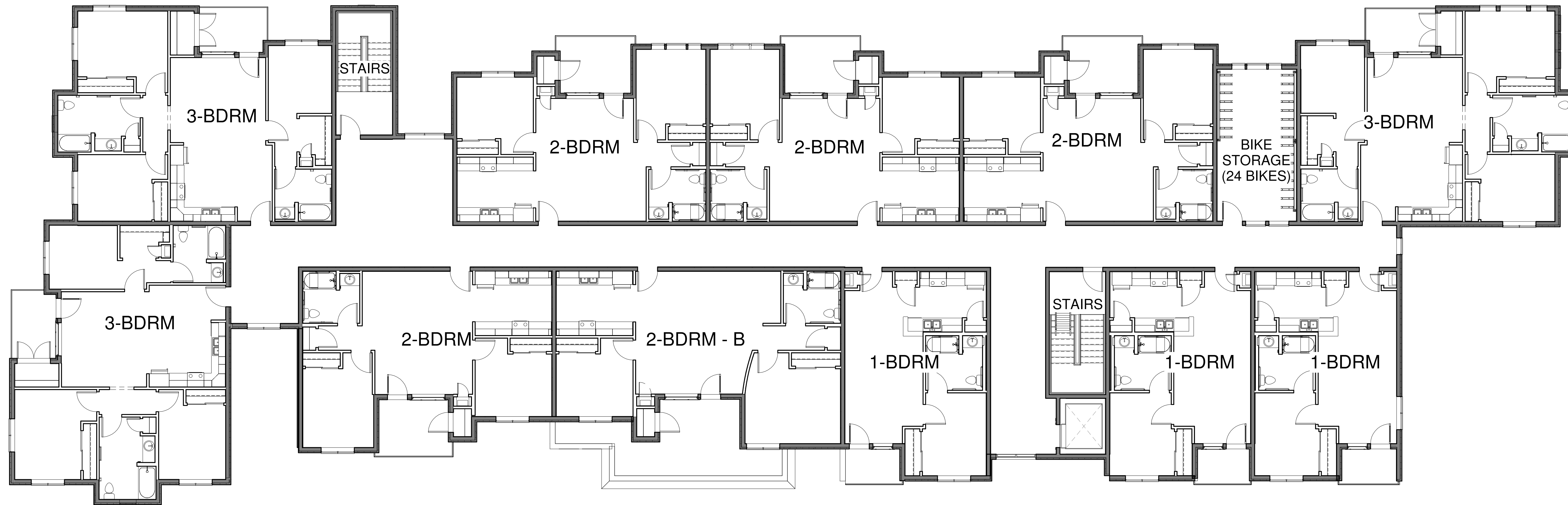
7TH STREET AT I & J STREETS

SCHEMATIC DESIGN

A2.3



THIS DRAWING CONTAINS INFORMATION WHICH IS THE PROPERTY OF DG GROUP ARCHITECTURE PLLC. NO UNAUTHORIZED REUSE OR REPLICATION OF THESE PLANS OR ANY INFORMATION CONTAINED HEREIN WITHOUT THE EXPRESS WRITTEN CONSENT OF DOUGLAS L. GIBSON, THIS DRAWING IS NOT TO BE USED FOR CONSTRUCTION UNTIL IT IS SIGNED BY THE ARCHITECT



① FOURTH FLOOR PLAN
1/8" = 1'-0"

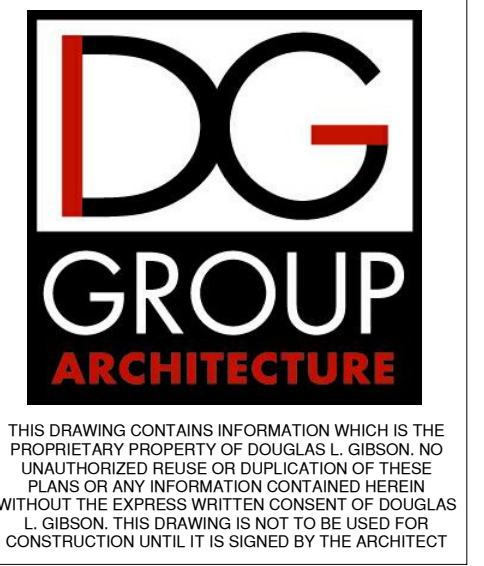
DG GROUP ARCHITECTURE PLLC
430 E. STATE STREET, SUITE 100
EAGLE, IDAHO 83616
(208) 461-0022
fax: (208) 461-3267

ALASKA - ARIZONA - CALIFORNIA - COLORADO - HAWAII - IDAHO - ILLINOIS - IOWA - KANSAS - MICHIGAN - MINNESOTA - MISSOURI - NEBRASKA - NEVADA - NEW JERSEY - NEW YORK - NORTH CAROLINA - NORTH DAKOTA - OREGON - SOUTH DAKOTA - UTAH - WASHINGTON - WYOMING

PROJECT
7TH STREET AT I & J STREETS
ARCATA, CA

ISACKSONS ARCATA

PROJECT
7TH STREET AT I & J STREETS
ARCATA, CA



THIS DRAWING CONTAINS INFORMATION WHICH IS THE PROPERTY OF DG GROUP ARCHITECTURE PLLC. IT IS TO BE USED ONLY FOR THE PROJECT AND SITE SPECIFICALLY IDENTIFIED HEREIN. WITHOUT THE EXPRESS WRITTEN CONSENT OF DG GROUP ARCHITECTURE PLLC, THIS DRAWING IS NOT TO BE USED FOR CONSTRUCTION UNTIL IT IS SIGNED BY THE ARCHITECT.

DG GROUP ARCHITECTURE PLLC
430 E. STATE STREET, SUITE 100
EAGLE, IDAHO 83616
(208) 461-0022
fax: (208) 461-3267

ALASKA - ARIZONA - CALIFORNIA - COLORADO - HAWAII - IDAHO - ILLINOIS - IOWA - KANSAS - MICHIGAN - MINNESOTA - MISSOURI - NEBRASKA - NEVADA - NEW JERSEY - NEW YORK - NORTH CAROLINA - NORTH DAKOTA - OREGON - SOUTH DAKOTA - UTAH - WASHINGTON - WYOMING

ARCATA, CA

ISACKSONS ARCATA

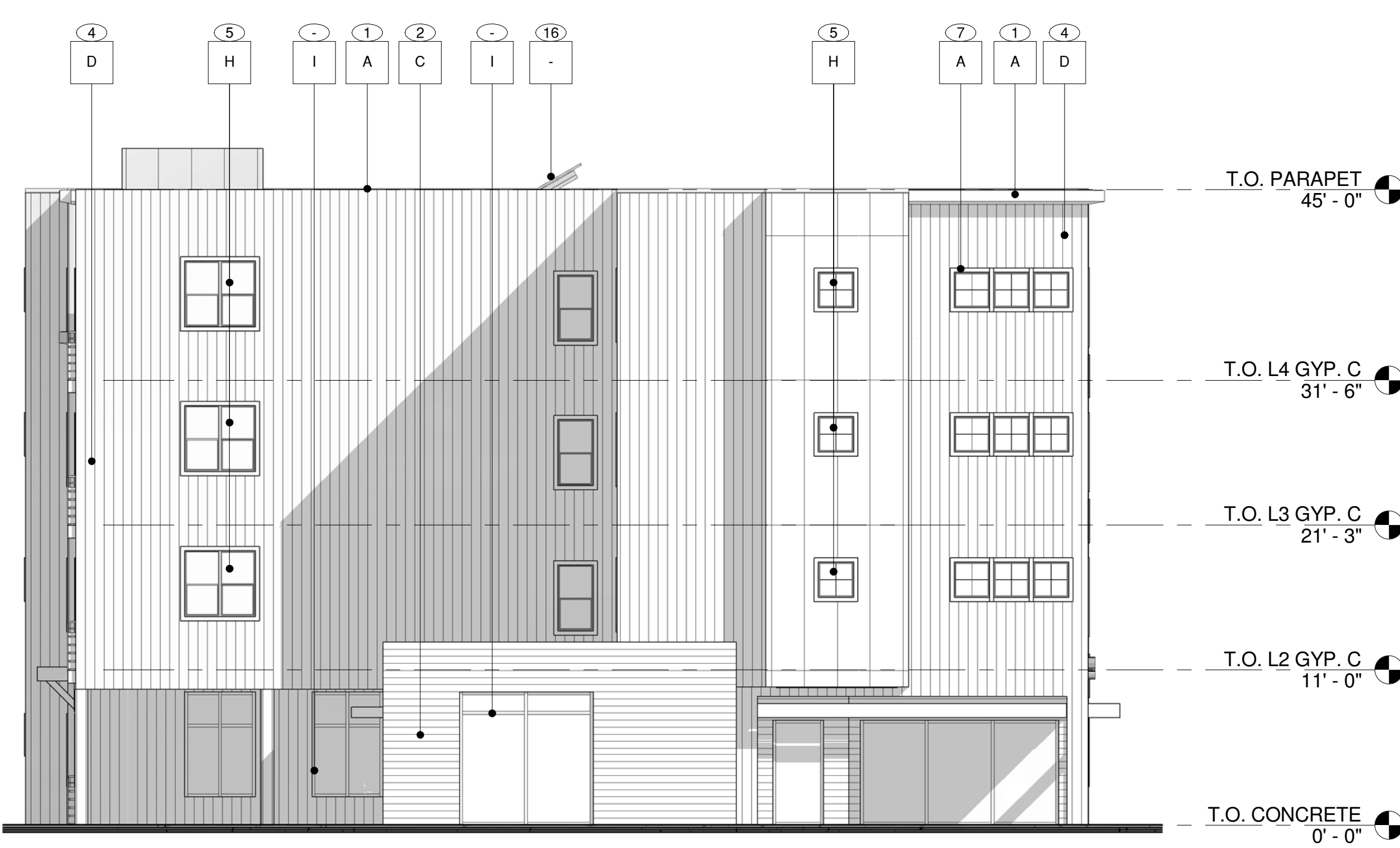
PROJECT: 7TH STREET AT I & J STREETS
SCHEMATIC DESIGN

A3.1



1 NORTH ELEVATION
1/8" = 1'-0"

- KEY NOTES**
1. PAINTED METAL COPING OR TRIM
 2. PAINTED HORIZONTAL CEMENTITIOUS SIDING OR APPROVED EQUAL.
 3. PAINTED CEMENTITIOUS PANELS WITH REVEALS, OR APPROVED EQUAL.
 4. PAINTED 1" HIGH AT 6" O.C. VERTICAL RIBBED METAL SIDING WITH EXPOSED FASTENERS, OR APPROVED EQUAL.
 5. WHITE MILGARD VINYL WINDOWS. SEE FLOOR PLANS, WINDOW SCHEDULE, AND SPECIFICATIONS.
 6. EXTERIOR DOOR. SEE FLOOR PLANS, DOOR SCHEDULE, AND SPECIFICATIONS. PAINT AS NOTED.
 7. CEMENTITIOUS DOOR/WINDOW TRIM. PAINT AS NOTED.
 8. PAINTED WOOD OUTRIGGER. COLOR AS NOTED.
 9. 2x HORIZONTAL TRIM PAINTED, ALIGN TRIM AS SHOWN.
 10. 4" VERTICAL TRIM, TYP.
 11. 1x FINISH FASCIA, MDF OR EQUAL. SEE DETAILS.
 12. METAL RAILING SYSTEM. COLOR AS NOTED. SEE BUILDING CROSS SECTIONS.
 13. METAL WITH STAINED REDWOOD SLATS, RAILING SYSTEM.
 14. COLUMN, POST, AND BEAM. REFER TO BUILDING CROSS SECTIONS & DETAILS.
 15. WOOD TRIM OR ARCHITECTURAL FEATURE. SEE BUILDING SECTIONS.
 16. PROPOSED SOLAR PANELS



2 EAST ELEVATION
1/8" = 1'-0"



3 WEST ELEVATION
1/8" = 1'-0"

- MATERIAL FINISHES:**
- A. PAINTED METAL COPING OR OTHER CEMENTITIOUS DOOR AND WINDOW TRIM - BENJAMIN MOORE 1560 - ANTIQUE PEWTER
 - B. PAINTED METAL - BENJAMIN MOORE 2132-10 BLACK
 - C. CEMENTITIOUS CLAPBOARD SIDING 7" - SHERWIN WILLIAMS SW 7047 PORPOISE
 - D. PAINTED VERTICAL RIBBED SIDING - BENJAMIN MOORE 2110-10 TAUPE
 - E. PAINTED CEMENTITIOUS PANELS WITH REVEALS - SHERWIN WILLIAMS SW 7558 GRAY CLOUDS
 - F. PAINTED CEMENTITIOUS PANELS WITH REVEALS - SHERWIN WILLIAMS SW 2739 CHARCOAL BLUE
 - G. SEMI-TRANSPARENT STAINED REDWOOD - CLEAR NATURAL STAIN
 - H. VINYL MILGARD WINDOW OR DOOR, WHITE
 - I. COATED ALUMINUM STOREFRONT WHITE
 - J. PAINTED TRIM - BENJAMIN MOORE CASTLE PEAK GRAY 1561



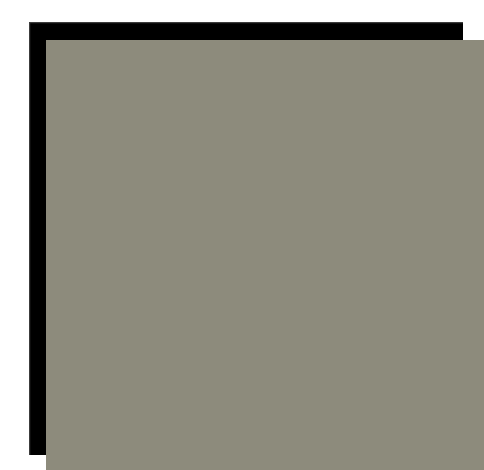
4 SOUTH ELEVATION
1/8" = 1'-0"



THIS DRAWING CONTAINS INFORMATION WHICH IS THE PROPERTY OF DG GROUP ARCHITECTURE PLLC. NO UNAUTHORIZED REUSE OR REPLICATION OF THESE PLANS OR ANY INFORMATION CONTAINED HEREIN WITHOUT THE EXPRESS WRITTEN CONSENT OF DOUGLAS L. GIBSON. THIS DRAWING IS NOT TO BE USED FOR CONSTRUCTION UNTIL IT IS SIGNED BY THE ARCHITECT



1 RENDERING AT NORTH ELEVATION
1/8" = 1'-0"



A TRIM
ANTIQUE PEWTER
BENJAMIN MOORE 1560



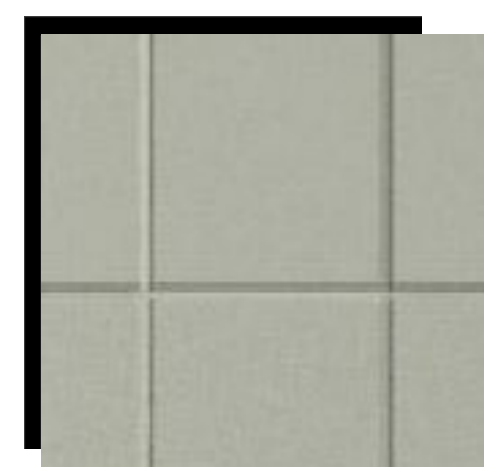
B PAINTED METAL
BLACK
BENJAMIN MOORE 2132-10



C CEMENTITIOUS 7" CLAPBOARD SIDING
PORPOISE
SHERWIN WILLIAMS SW 7047



D METAL SIDING
TALIFE
BENJAMIN MOORE 2110-10



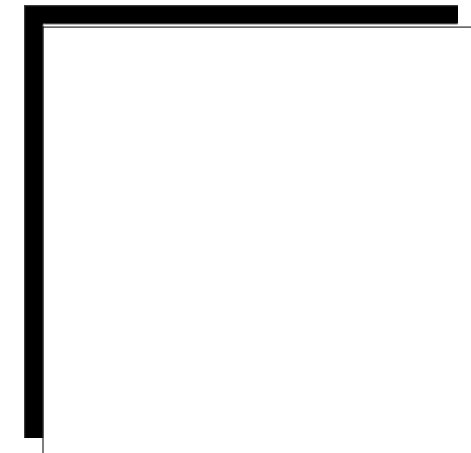
E CEMENTITIOUS PANELS
GRAY CLOUDS
SHERWIN WILLIAMS SW 7658



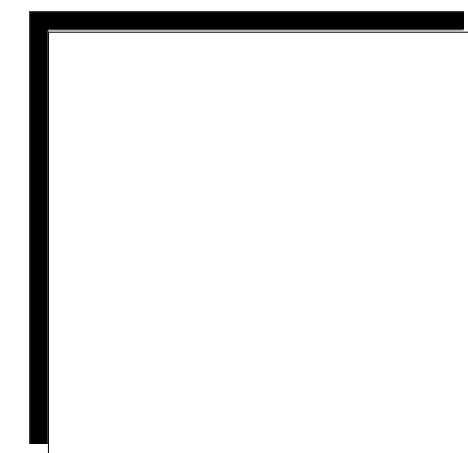
F CEMENTITIOUS PANELS
CHARCOAL BLUE
SHERWIN WILLIAMS SW 2739



G REDWOOD
CLEAR NATURAL STAIN



H VINYL WINDOWS
WHITE



I STOREFRONT
WHITE



J TRIM
CASTLE PEAK GRAY
BENJAMIN MOORE 1561

DG GROUP ARCHITECTURE PLLC
430 E. STATE STREET, SUITE 100
EAGLE, IDAHO 83616
(208) 461-0022
fax: (208) 461-3267

ALASKA - ARIZONA - CALIFORNIA - COLORADO - HAWAII - IDAHO - ILLINOIS - IOWA - KANSAS - MICHIGAN - MINNESOTA - MONTANA - NEBRASKA - NEVADA - NEW JERSEY - NEW MEXICO - NORTH CAROLINA - NORTH DAKOTA - OREGON - SOUTH DAKOTA - UTAH - WASHINGTON - WYOMING

PROJECT
7TH STREET AT I & J STREETS
ARCATA, CA

ISACKSONS ARCATA



① 3D VIEW FROM NORTHEAST
1/4" = 1'-0"

REVISIONS

COPYRIGHT © BY DG GROUP
ARCHITECTURE PLLC

DATE
09/13/19

DRAWN BY
BP

PROJECT #
ECP18-9



THIS DRAWING CONTAINS INFORMATION WHICH IS THE PROPERTY OF DG GROUP ARCHITECTURE PLLC. NO UNAUTHORIZED REUSE OR REPLICATION OF THESE DRAWINGS OR INFORMATION CONTAINED HEREIN WITHOUT THE EXPRESS WRITTEN CONSENT OF DG GROUP ARCHITECTURE PLLC IS PERMITTED. THIS DRAWING IS NOT TO BE USED FOR CONSTRUCTION UNTIL IT IS SIGNED BY THE ARCHITECT.

DG GROUP ARCHITECTURE PLLC
430 E. STATE STREET, SUITE 100
EAGLE, IDAHO 83616
(208) 461-0022
fax: (208) 461-3267

ALASKA - ARIZONA - CALIFORNIA - COLORADO - HAWAII - IDAHO - ILLINOIS - IOWA - KANSAS - MICHIGAN - MINNESOTA - MISSOURI - NEBRASKA - NEVADA - NEW JERSEY - NEW YORK - NORTH CAROLINA - NORTH DAKOTA - OREGON - SOUTH DAKOTA - U.S.V.I. - UTAH - WASHINGTON - WYOMING

ARCATA, CA

PROJECT

ISACKSONS ARCATA

7TH STREET AT I & J STREETS

SCHEMATIC DESIGN

A4.2



THIS DRAWING CONTAINS INFORMATION WHICH IS THE PROPERTY OF DG GROUP ARCHITECTURE PLLC. UNAUTHORIZED REUSE OR PLAGIATION OF THESE DRAWINGS OR ANY INFORMATION CONTAINED HEREIN WITHOUT THE EXPRESS WRITTEN CONSENT OF DG GROUP ARCHITECTURE PLLC IS STRICTLY PROHIBITED. THIS DRAWING IS NOT TO BE USED FOR CONSTRUCTION UNTIL IT IS SIGNED BY THE ARCHITECT.



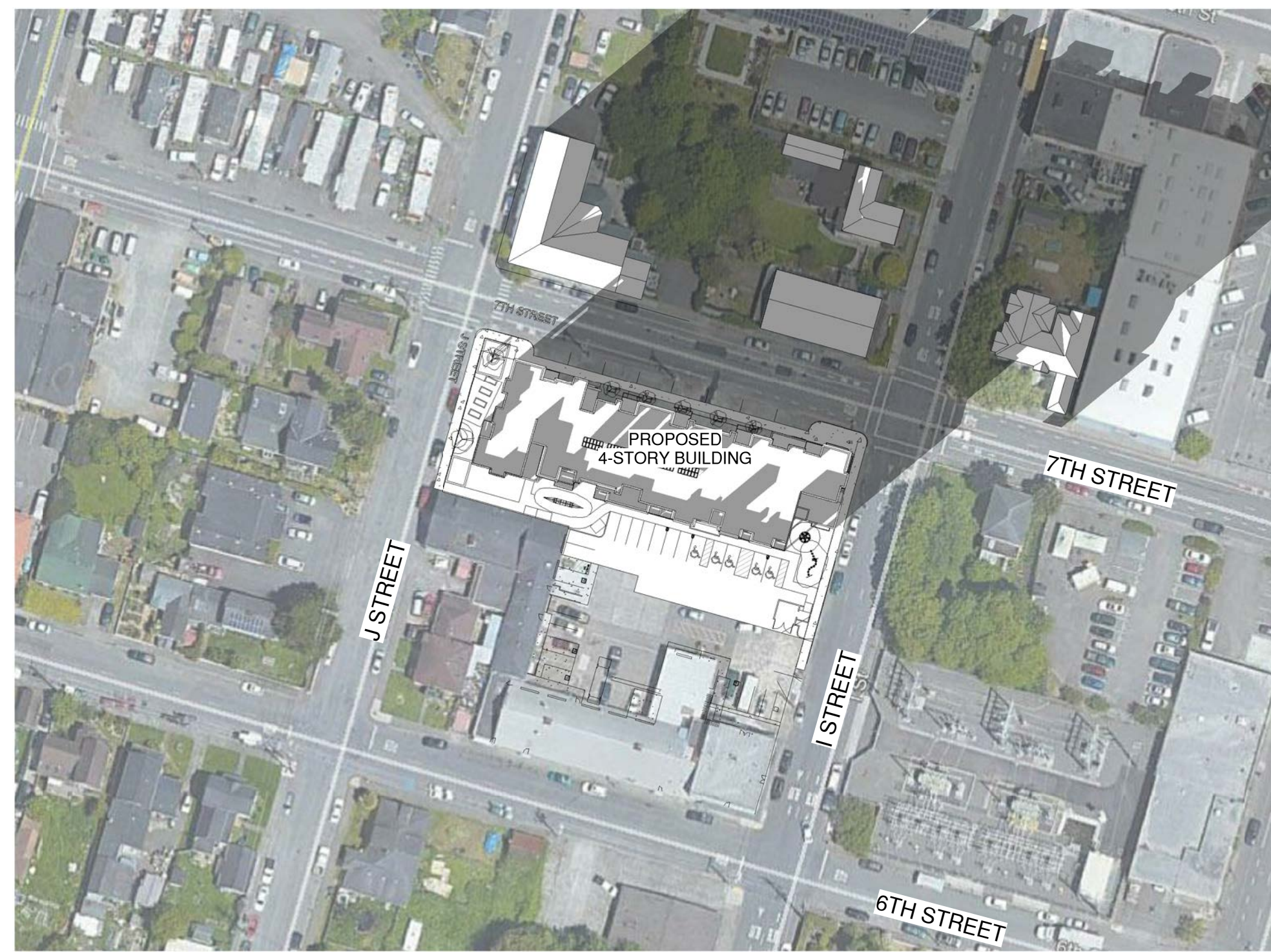
1 SHADOWS DECEMBER 21ST - 10 AM
1" = 80'-0"



2 SHADOWS DECEMBER 21ST - 12 PM
1" = 80'-0"



3 SHADOWS DECEMBER 21ST - 3 PM
1" = 80'-0"



4 SHADOWS DECEMBER 21ST - 4:00 PM
1" = 80'-0"



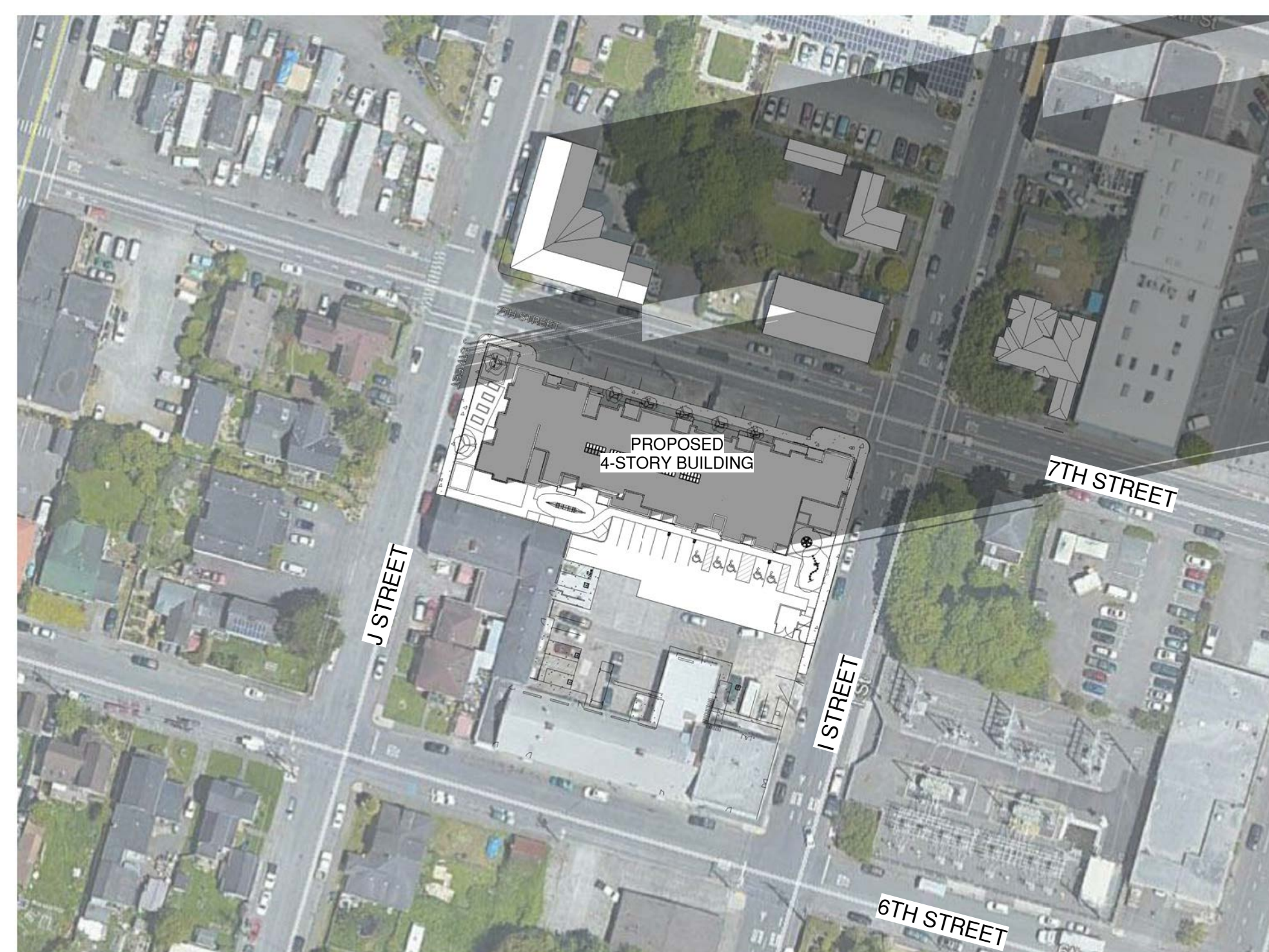
5 SHADOWS MARCH 1ST - 10 AM
1" = 80'-0"



6 SHADOWS MARCH 1ST - 12 PM
1" = 80'-0"



7 SHADOWS MARCH 1ST - 3 PM
1" = 80'-0"



8 SHADOWS MARCH 1ST - 6 PM
1" = 80'-0"

DG GROUP ARCHITECTURE PLLC
430 E. STATE STREET, SUITE 100
EAGLE, IDAHO 83616
(208) 461-0022
fax (208) 461-3267

ALASKA - ARIZONA - CALIFORNIA - COLORADO - HAWAII - IDAHO - ILLINOIS - IOWA - KANSAS - LOUISIANA - MARYLAND - MASSACHUSETTS - MICHIGAN - MINNESOTA - MISSOURI - NEBRASKA - NEVADA - NEW JERSEY - NEW MEXICO - NEW YORK - NORTH CAROLINA - NORTH DAKOTA - OREGON - SOUTH DAKOTA - TEXAS - UTAH - WASHINGTON - WYOMING

ARCATA, CA

ISACKSONS ARCATA

PROJECT 7TH STREET AT I & J STREETS

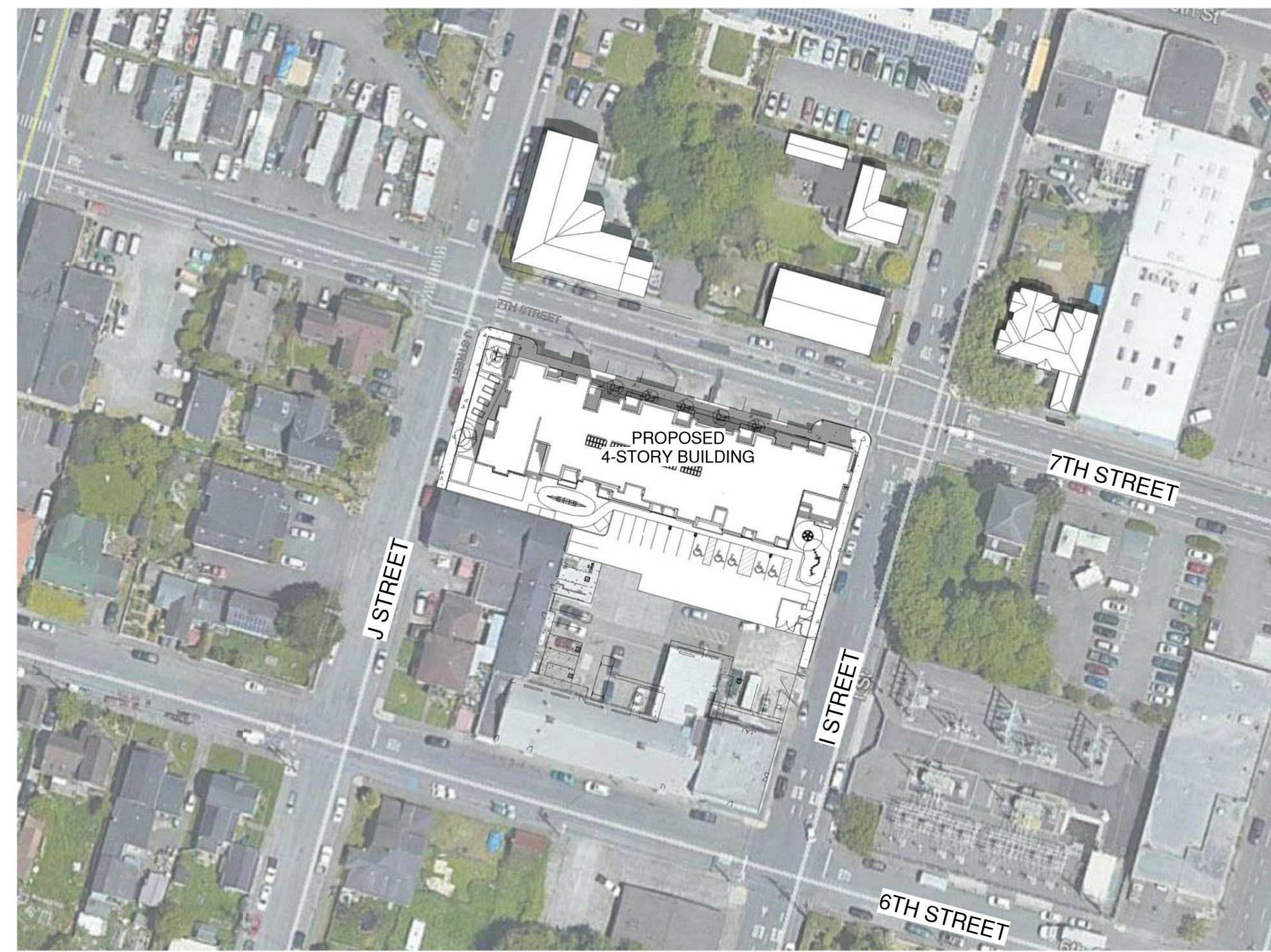
SCHEMATIC DESIGN



THIS DRAWING CONTAINS INFORMATION WHICH IS THE PROPERTY OF DG GROUP ARCHITECTURE PLLC. NO PART OF THIS DRAWING IS TO BE REPRODUCED OR TRANSMITTED IN ANY FORM OR BY ANY MEANS, ELECTRONIC OR MECHANICAL, WITHOUT THE EXPRESS WRITTEN CONSENT OF DG GROUP ARCHITECTURE PLLC. THIS DRAWING IS NOT TO BE USED FOR CONSTRUCTION UNTIL IT IS SIGNED BY THE ARCHITECT.



1 SHADOWS JUNE 1ST - 10 AM
1" = 80'-0"



2 SHADOWS JUNE 1ST - 12 PM
1" = 80'-0"



3 SHADOWS JUNE 1ST - 3 PM
1" = 80'-0"



4 SHADOWS JUNE 1ST - 6 PM
1" = 80'-0"



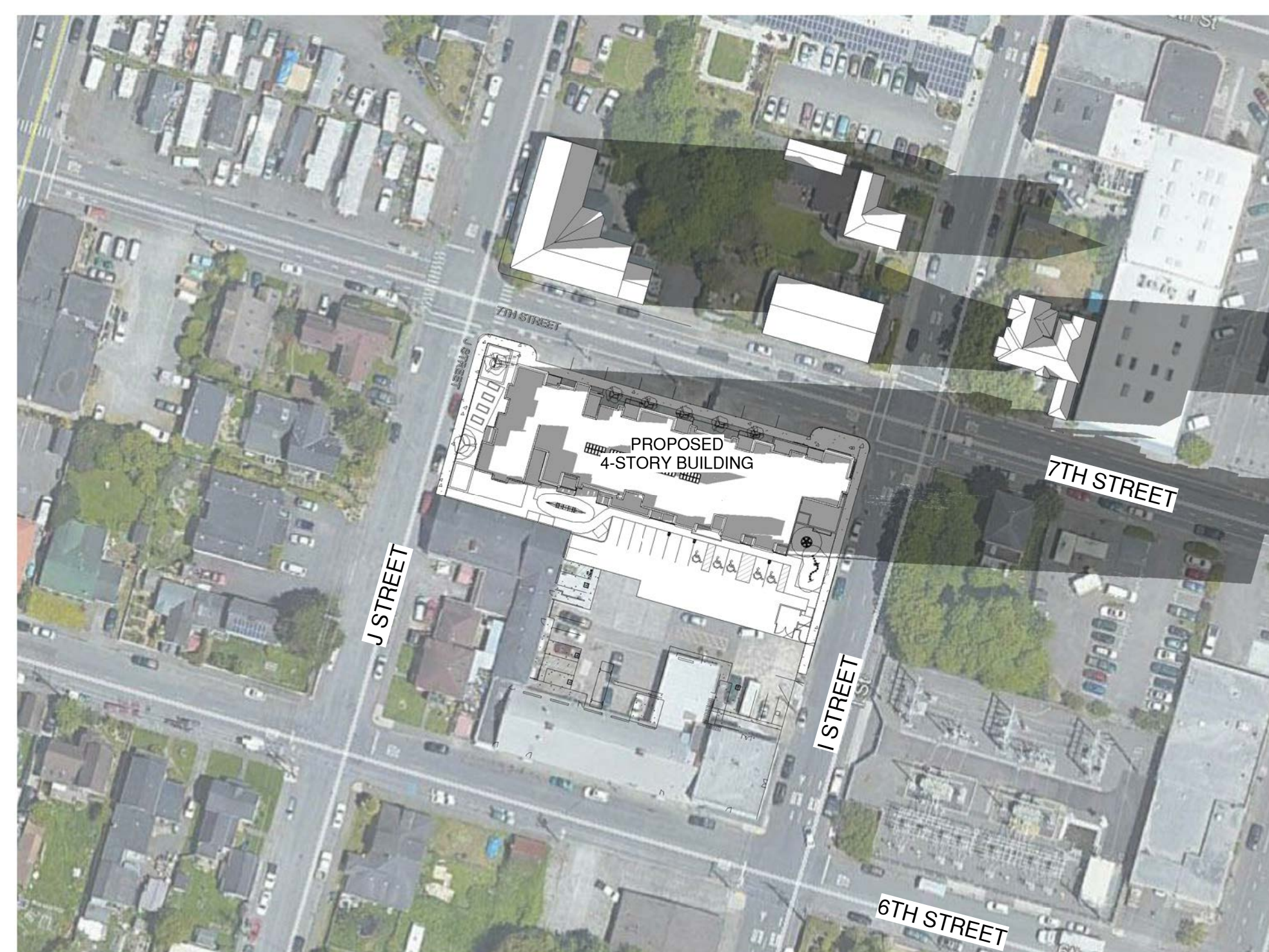
5 SHADOWS SEPTEMBER 1ST - 10 AM
1" = 80'-0"



6 SHADOWS SEPTEMBER 1ST - 12 PM
1" = 80'-0"



7 SHADOWS SEPTEMBER 1ST - 3 PM
1" = 80'-0"



8 SHADOWS SEPTEMBER 1ST - 6 PM
1" = 80'-0"

DG GROUP ARCHITECTURE PLLC

430 E. STATE STREET, SUITE 100

EAGLE, IDAHO 83616

(208) 461-0022

fax (208) 461-3267

ALASKA - ARIZONA - CALIFORNIA - COLORADO - HAWAII - IDAHO - ILLINOIS - IOWA - KANSAS - LOUISIANA - MARYLAND - MASSACHUSETTS - MICHIGAN - MINNESOTA - MISSOURI - NEBRASKA - NEVADA - NEW JERSEY - NEW YORK - NORTH CAROLINA - NORTH DAKOTA - OREGON - SOUTH DAKOTA - TEXAS - UTAH - WASHINGTON - WYOMING

ARCATA, CA

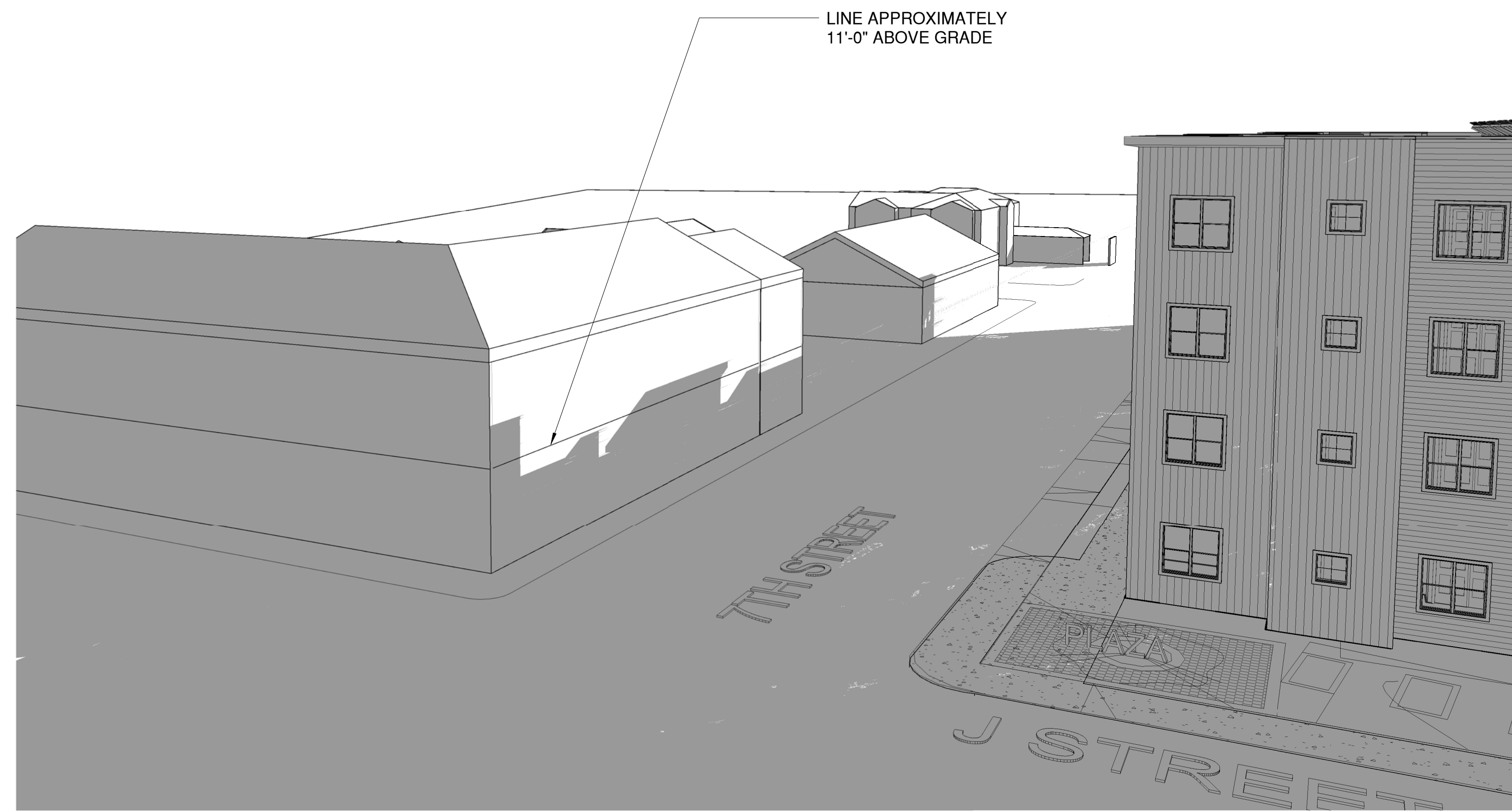
ISACKSONS ARCATA

PROJECT

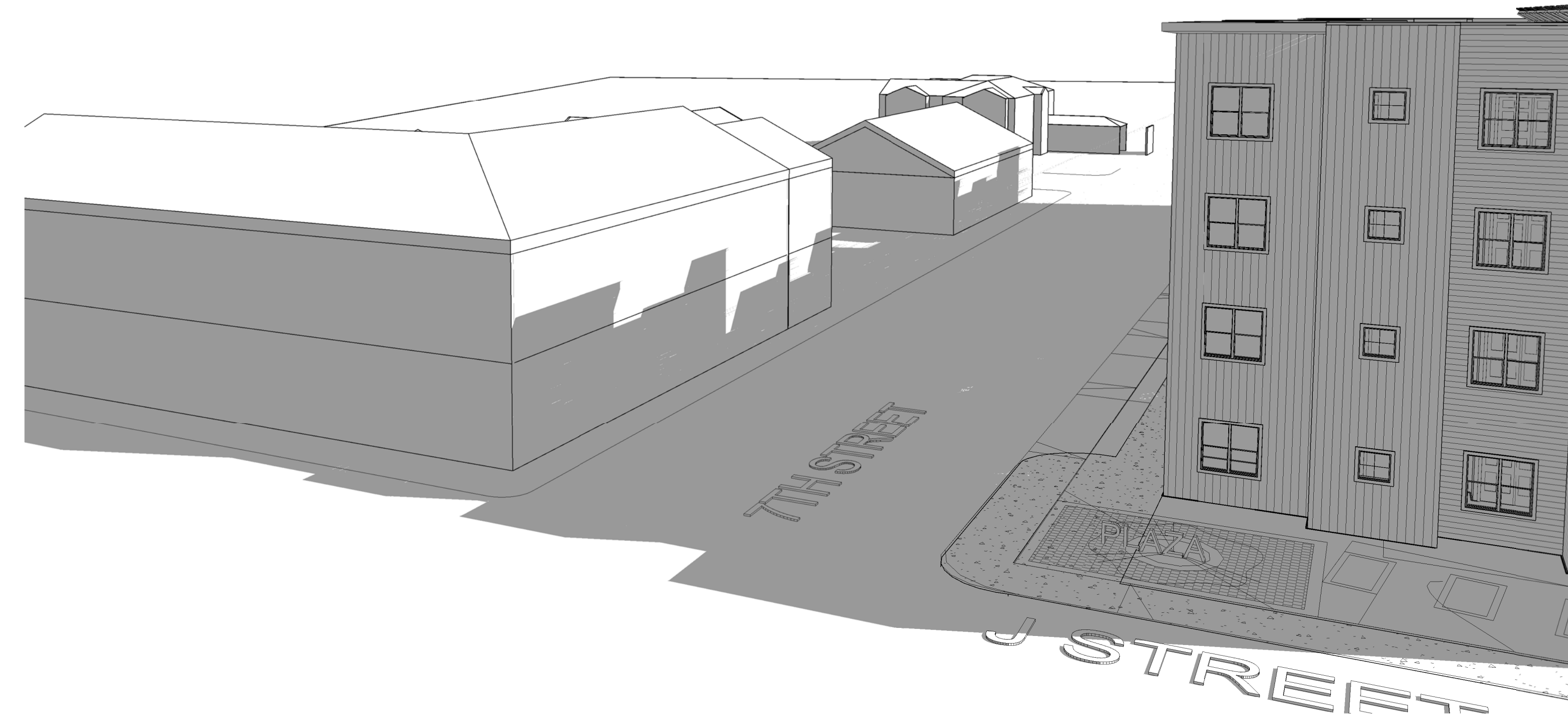
7TH STREET AT I & J STREETS

SCHEMATIC DESIGN

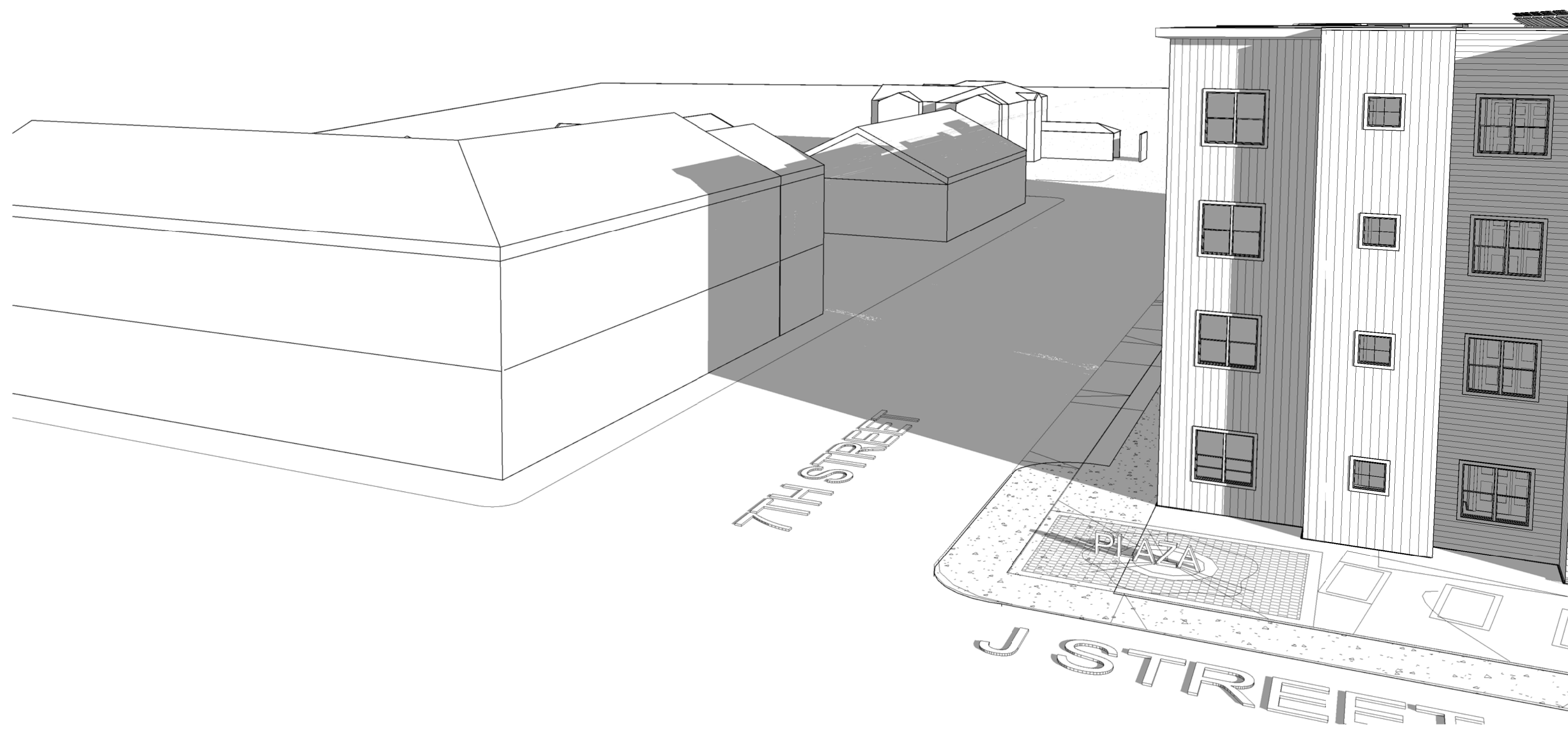
A4.4



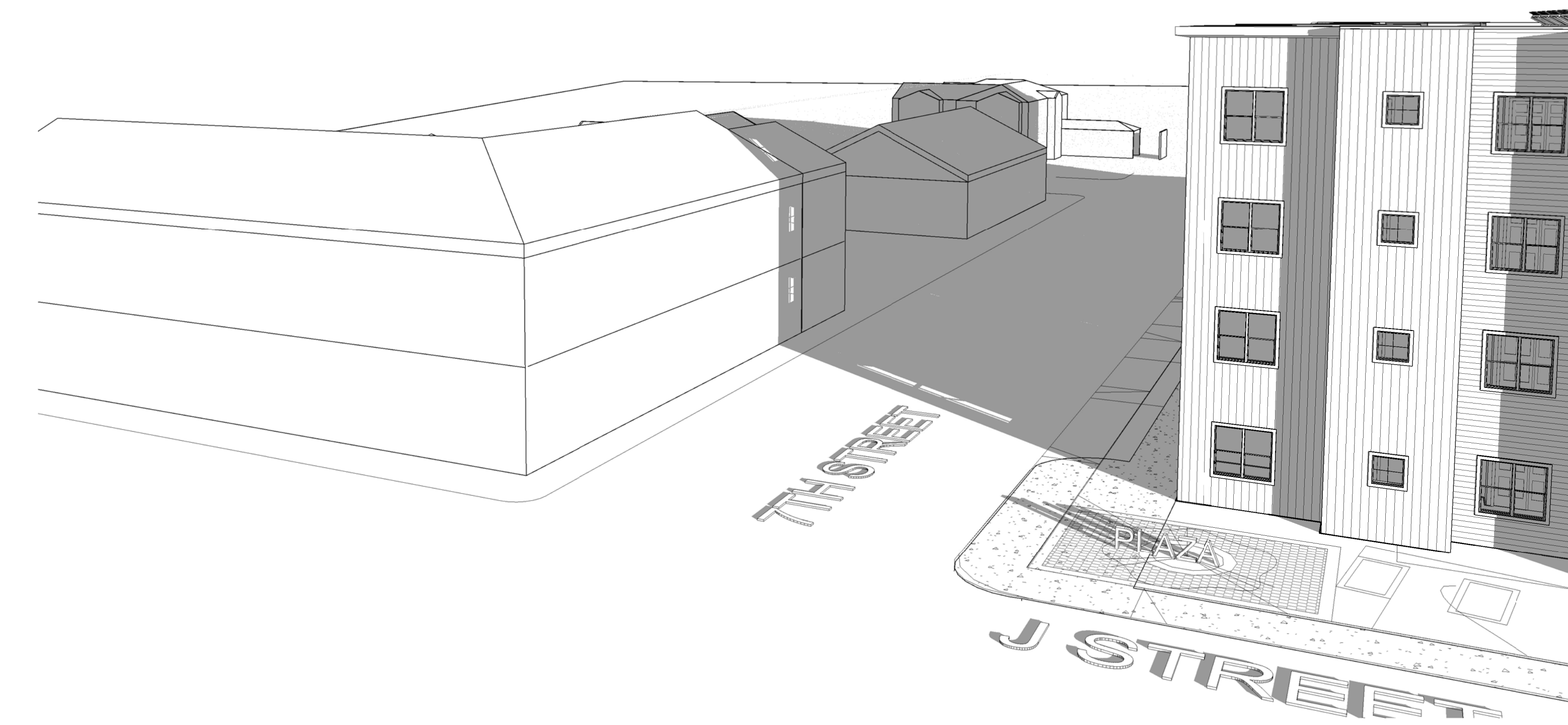
1 SOLAR STUDY DEC 21ST 10 AM



2 SOLAR STUDY DEC 21ST 12 PM



3 SOLAR STUDY DEC 21ST 3 PM



4 SOLAR STUDY DEC 21ST 4 00 PM

AS PROPOSED

REVISIONS

COPYRIGHT © BY DG GROUP ARCHITECTURE PLLC

DATE

09/13/19

DRAWN BY

BP

PROJECT #

ECP18-9



THIS DRAWING CONTAINS INFORMATION WHICH IS THE PROPERTY OF DOUGLAS L. GIBSON, AND UNAUTHORIZED REUSE OR PLAGIATION OF THESE DRAWINGS FOR ANY INFORMATION CONTAINED HEREIN WITHOUT THE EXPRESS WRITTEN CONSENT OF DOUGLAS L. GIBSON, THIS DRAWING IS NOT TO BE USED FOR CONSTRUCTION UNTIL IT IS SIGNED BY THE ARCHITECT

DG GROUP ARCHITECTURE PLLC

430 E. STATE STREET, SUITE 100

EAGLE, IDAHO 83616

(208) 461-0022

fax: (208) 461-3267

ALASKA - ARIZONA - CALIFORNIA - COLORADO - HAWAII - IDAHO - ILLINOIS - INDIANA - IOWA - KANSAS - KENTUCKY - LOUISIANA - MARYLAND - MASSACHUSETTS - MICHIGAN - MINNESOTA - MISSISSIPPI - MISSOURI - MONTANA - NEBRASKA - NEVADA - NEW HAMPSHIRE - NEW JERSEY - NEW YORK - NORTH CAROLINA - NORTH DAKOTA - OREGON - SOUTH CAROLINA - SOUTH DAKOTA - TEXAS - UTAH - VIRGINIA - WASHINGTON - WISCONSIN - WYOMING

ARCATA, CA

ISACKSONS ARCATA

PROJECT

7TH STREET AT I & J STREETS

A4.5

SCHEMATIC DESIGN